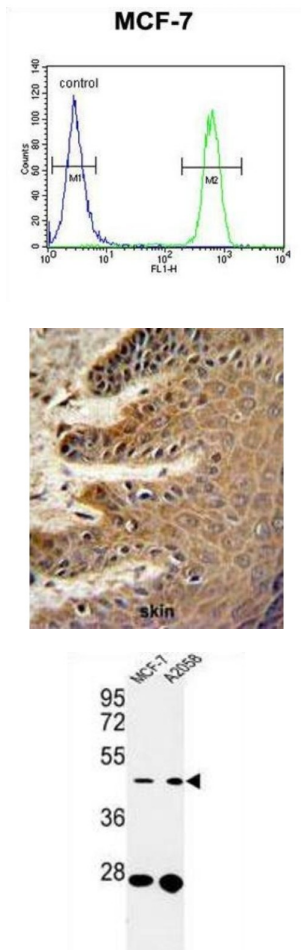


## Cell Division Cycle 37 (CDC37) Antibody

Catalogue No.: abx034179



CDC37 is a cell division cycle control protein of *Saccharomyces cerevisiae*. This protein is a molecular chaperone with specific function in cell signal transduction. It has been shown to form complex with Hsp90 and a variety of protein kinases including CDK4, CDK6, SRC, RAF-1, MOK, as well as eIF2 alpha kinases. It is thought to play a critical role in directing Hsp90 to its target kinases.

**Target:** Cell Division Cycle 37 (CDC37)

**Clonality:** Polyclonal

**Reactivity:** Human, Rat

**Tested Applications:** ELISA, WB, IHC, FCM

**Host:** Rabbit

**Recommended dilutions:** WB: 1/2000, IHC-P: 1/50 - 1/100, FCM: 1/10 - 1/50. Not tested in IHC-F. Optimal dilutions/concentrations should be determined by the end user.

# Datasheet

Version: 4.0.0  
Revision date: 03 Oct 2025



<b>Conjugation:</b>	Unconjugated
<b>Immunogen:</b>	KLH-conjugated synthetic peptide between 116-144 amino acids from the Central region of human CDC37.
<b>Isotype:</b>	IgG
<b>Form:</b>	Liquid
<b>Purification:</b>	Purified through a protein A column, followed by peptide affinity purification.
<b>Storage:</b>	Aliquot and store at -20°C. Avoid repeated freeze/thaw cycles.
<b>UniProt Primary AC:</b>	Q16543 ( <a href="#">UniProt</a> , <a href="#">ExPASy</a> )
<b>KEGG:</b>	hsa:11140
<b>String:</b>	<a href="#">9606.ENSP00000222005</a>
<b>Molecular Weight:</b>	Calculated MW: 44.5 kDa
<b>Buffer:</b>	PBS containing 0.09% sodium azide.
<b>Note:</b>	THIS PRODUCT IS FOR RESEARCH USE ONLY. NOT FOR USE IN DIAGNOSTIC, THERAPEUTIC OR COSMETIC PROCEDURES. NOT FOR HUMAN OR ANIMAL CONSUMPTION.