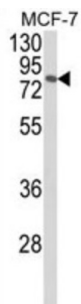
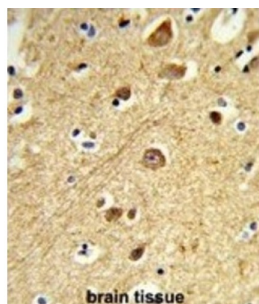
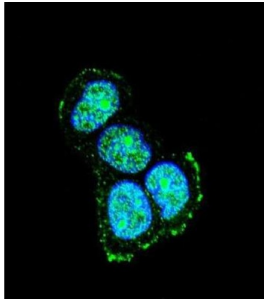


## C-Jun-Amino-Terminal Kinase-Interacting Protein 1 / JIP1 (MAPK8IP1) Antibody

Catalogue No.: abx034197



JIP1 is a regulator of the pancreatic beta-cell function. It is highly similar to JIP-1, a mouse protein known to be a regulator of c-Jun amino-terminal kinase (Mapk8). This protein has been shown to prevent MAPK8 mediated activation of transcription factors, and decrease IL-1 beta and MAP kinase kinase 1 (MEKK1) induced apoptosis in pancreatic beta cells. This protein also functions as a DNA-binding transactivator of the glucose transporter GLUT2.

<b>Target:</b>	C-Jun-Amino-Terminal Kinase-Interacting Protein 1 / JIP1 (MAPK8IP1)
<b>Clonality:</b>	Polyclonal
<b>Reactivity:</b>	Human
<b>Tested Applications:</b>	ELISA, WB, IHC, IF/ICC, FCM
<b>Host:</b>	Rabbit

# Datasheet

Version: 2.0.0  
Revision date: 05 Jun 2025



**Recommended dilutions:** WB: 1/1000, IHC-P: 1/50 - 1/100, IF/ICC: 1/10 - 1/50, FCM: 1/10 - 1/50. Not tested in IHC-F.

Optimal dilutions/concentrations should be determined by the end user.

**Conjugation:** Unconjugated

**Immunogen:** KLH-conjugated synthetic peptide between 470-498 amino acids from the C-terminal region of human JIP1.

**Isotype:** IgG

**Form:** Liquid

**Purification:** Purified through a protein A column, followed by peptide affinity purification.

**Storage:** Aliquot and store at -20°C. Avoid repeated freeze/thaw cycles.

**UniProt Primary AC:** Q9UQF2 ([UniProt](#), [ExPASy](#))

**Gene Symbol:** MAPK8IP1

**String:** [9606.ENSP00000241014](#)

**Molecular Weight:** Calculated MW: 77.5 kDa

**Buffer:** PBS containing 0.09% sodium azide.

**Note:** THIS PRODUCT IS FOR RESEARCH USE ONLY. NOT FOR USE IN DIAGNOSTIC, THERAPEUTIC OR COSMETIC PROCEDURES. NOT FOR HUMAN OR ANIMAL CONSUMPTION.