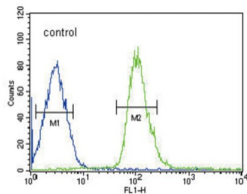


Dual Specificity Phosphatase 2 (DUSP2) Antibody

Catalogue No.: abx034220



DUSP2 is a member of the dual specificity protein phosphatase subfamily. These phosphatases inactivate their target kinases by dephosphorylating both the phosphoserine/threonine and phosphotyrosine residues. They negatively regulate members of the mitogen-activated protein (MAP) kinase superfamily (MAPK/ERK, SAPK/JNK, p38), which are associated with cellular proliferation and differentiation. Different members of the family of dual specificity phosphatases show distinct substrate specificities for various MAP kinases, different tissue distribution and subcellular localization, and different modes of inducibility of their expression by extracellular stimuli.

Target: Dual Specificity Phosphatase 2 (DUSP2)

Clonality: Polyclonal

Reactivity: Human, Mouse

Tested Applications: ELISA, WB, FCM

Host: Rabbit

Recommended dilutions: WB: 1/1000, FCM: 1/10 - 1/50. Optimal dilutions/concentrations should be determined by the end user.

Conjugation: Unconjugated

Immunogen: KLH-conjugated synthetic peptide between 262-290 amino acids from the C-terminal region of human DUSP2.

Isotype: IgG

Datasheet

Version: 4.0.0

Revision date: 26 Jun 2025



Form:	Liquid
Purification:	Purified Rabbit Polyclonal Antibody.
Storage:	Aliquot and store at -20°C. Avoid repeated freeze/thaw cycles.
UniProt Primary AC:	Q05923 (UniProt , ExPASy)
NCBI Accession:	NP_004409.1
KEGG:	hsa:1844
String:	9606.ENSP00000288943
Molecular Weight:	Calculated MW: 34.4 kDa
Buffer:	PBS containing 0.09% sodium azide.
Note:	THIS PRODUCT IS FOR RESEARCH USE ONLY. NOT FOR USE IN DIAGNOSTIC, THERAPEUTIC OR COSMETIC PROCEDURES. NOT FOR HUMAN OR ANIMAL CONSUMPTION.

For Reference Only