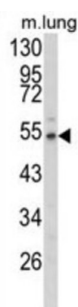
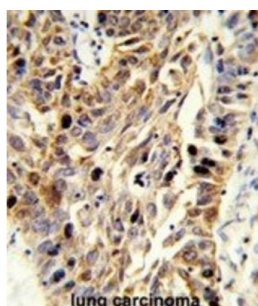
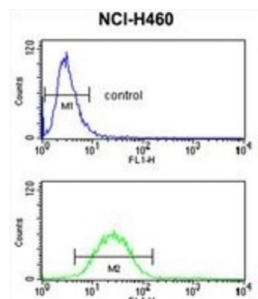


EGF Containing Fibulin Extracellular Matrix Protein 1 (EFEMP1) Antibody

Catalogue No.: abx034223



EFEMP1 encodes a member of the fibulin family of extracellular matrix glycoproteins. Like all members of this family, the encoded protein contains tandemly repeated epidermal growth factor-like repeats followed by a C-terminus fibulin-type domain. This gene is upregulated in malignant gliomas and may play a role in the aggressive nature of these tumors.

Target: EGF Containing Fibulin Extracellular Matrix Protein 1 (EFEMP1)

Clonality: Polyclonal

Reactivity: Human, Mouse

Tested Applications: ELISA, WB, IHC, FCM

Host: Rabbit

Datasheet

Version: 2.0.0
Revision date: 24 Jun 2025



Recommended dilutions:	WB: 1/1000, IHC-P: 1/50 - 1/100, FCM: 1/10 - 1/50. Not tested in IHC-F. Optimal dilutions/concentrations should be determined by the end user.
Conjugation:	Unconjugated
Immunogen:	KLH-conjugated synthetic peptide between 119-148 amino acids from the N-terminal region of human EFEMP1.
Isotype:	IgG
Form:	Liquid
Purification:	Purified through a protein A column, followed by peptide affinity purification.
Storage:	Aliquot and store at -20°C. Avoid repeated freeze/thaw cycles.
UniProt Primary AC:	Q12805 (UniProt , ExPASy)
KEGG:	hsa:2202
String:	9606.ENSP00000378058
Molecular Weight:	Calculated MW: 54.6 kDa
Buffer:	PBS containing 0.09% sodium azide.
Specificity:	Predicted to react with Rat and Monkey EFEMP1.
Note:	THIS PRODUCT IS FOR RESEARCH USE ONLY. NOT FOR USE IN DIAGNOSTIC, THERAPEUTIC OR COSMETIC PROCEDURES. NOT FOR HUMAN OR ANIMAL CONSUMPTION.