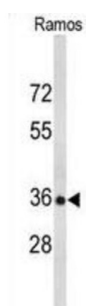
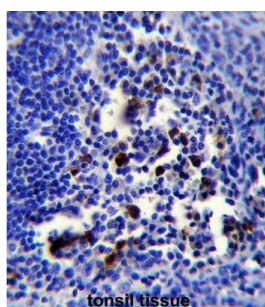
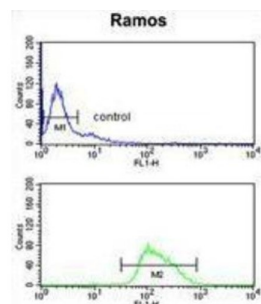


POU Class 2 Associating Factor 1 (POU2AF1) Antibody

Catalogue No.: abx034224



POU2AF1 is transcriptional coactivator that specifically associates with either OCT1 or OCT2. It boosts the OCT1 mediated promoter activity and to a lesser extent, that of OCT2. It has no intrinsic DNA-binding activity. It recognizes the POU domains of OCT1 and OCT2. It is essential for the response of B-cells to antigens and required for the formation of germinal centers.

Target: POU Class 2 Associating Factor 1 (POU2AF1)

Clonality: Polyclonal

Reactivity: Human

Tested Applications: ELISA, WB, IHC, FCM

Host: Rabbit

Recommended dilutions: WB: 1/2000, IHC-P: 1/10 - 1/50, FCM: 1/10 - 1/50. Not tested in IHC-F. Optimal dilutions/concentrations should be determined by the end user.

Datasheet

Version: 7.0.0
Revision date: 02 Oct 2025



Conjugation:	Unconjugated
Immunogen:	KLH-conjugated synthetic peptide between 1-27 amino acids from the N-terminal region of human POU2AF1.
Isotype:	IgG
Form:	Liquid
Purification:	Purified through a protein A column, followed by peptide affinity purification.
Storage:	Aliquot and store at -20°C. Avoid repeated freeze/thaw cycles.
UniProt Primary AC:	Q16633 (UniProt , ExPASy)
KEGG:	hsa:5450
String:	9606.ENSP00000376786
Molecular Weight:	Calculated MW: 27.4 kDa
Buffer:	PBS containing 0.09% sodium azide.
Note:	THIS PRODUCT IS FOR RESEARCH USE ONLY. NOT FOR USE IN DIAGNOSTIC, THERAPEUTIC OR COSMETIC PROCEDURES. NOT FOR HUMAN OR ANIMAL CONSUMPTION.