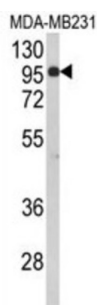
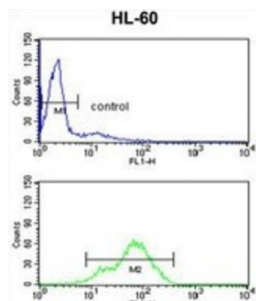


# Bromo Adjacent Homology Domain-Containing 1 Protein (BAHD1) Antibody

Catalogue No.: abx034252



BAHD1 is a heterochromatin protein that acts as a transcription repressor and has the ability to promote the formation of large heterochromatic domains. It may act by recruiting heterochromatin proteins such as CBX5 (HP1 alpha), HDAC5 and MBD1. It represses IGF2 expression by binding to its CpG-rich P3 promoter and recruiting heterochromatin proteins.

**Target:** Bromo Adjacent Homology Domain-Containing 1 Protein (BAHD1)

**Clonality:** Polyclonal

**Reactivity:** Human

**Tested Applications:** ELISA, WB, IHC, FCM

**Host:** Rabbit

# Datasheet

Version: 3.0.0  
Revision date: 25 Jun 2025



**Recommended dilutions:** WB: 1/1000, IHC-P: 1/50 - 1/100, FCM: 1/10 - 1/50. Not tested in IHC-F. Optimal dilutions/concentrations should be determined by the end user.

**Conjugation:** Unconjugated

**Immunogen:** KLH-conjugated synthetic peptide between 750-777 amino acids from the C-terminal region of human BAHD1.

**Isotype:** IgG

**Form:** Liquid

**Purification:** Purified through a protein A column, followed by peptide affinity purification.

**Storage:** Aliquot and store at -20°C. Avoid repeated freeze/thaw cycles.

**UniProt Primary AC:** Q8TBE0 ([UniProt](#), [ExPASy](#))

**Gene Symbol:** BAHD1

**KEGG:** hsa:22893

**String:** [9606.ENSP00000396976](#)

**Molecular Weight:** Calculated MW: 84.7 kDa

**Buffer:** PBS containing 0.09% sodium azide.

**Specificity:** Predicted to react with Mouse BAHD1.

**Note:** THIS PRODUCT IS FOR RESEARCH USE ONLY. NOT FOR USE IN DIAGNOSTIC, THERAPEUTIC OR COSMETIC PROCEDURES. NOT FOR HUMAN OR ANIMAL CONSUMPTION.