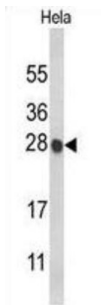


## Histone Cluster 1 H1 Family Member C (HIST1H1C) Antibody

Catalogue No.: abx034255



Histones H1 are necessary for the condensation of nucleosome chains into higher order structures.

|                               |   |
|-------------------------------|---|
| <b>Target:</b>                | Histone Cluster 1 H1 Family Member C (HIST1H1C)   |
| <b>Clonality:</b>             | Polyclonal  |
| <b>Reactivity:</b>            | Human   |
| <b>Tested Applications:</b>   | ELISA, WB   |
| <b>Host:</b>                  | Rabbit  |
| <b>Recommended dilutions:</b> | WB: 1/2000. Optimal dilutions/concentrations should be determined by the end user.                      |
| <b>Conjugation:</b>           | Unconjugated  |
| <b>Immunogen:</b>             | KLH-conjugated synthetic peptide between 105-131 amino acids from the Central region of human HIST1H1C. |
| <b>Isotype:</b>               | IgG   |
| <b>Form:</b>                  | Liquid  |
| <b>Purification:</b>          | Purified through a protein A column, followed by peptide affinity purification.                         |
| <b>Storage:</b>               | Aliquot and store at -20°C. Avoid repeated freeze/thaw cycles.  |
| <b>UniProt Primary AC:</b>    | P16403 ( <a href="#">UniProt</a> , <a href="#">ExPASy</a> )   |
| <b>Gene Symbol:</b>           | H1-2  |
| <b>KEGG:</b>                  | hsa:3006  |

# Datasheet

Version: 3.0.0

Revision date: 01 Jul 2025



**String:** [9606.ENSF00000339566](#)

**Molecular Weight:** Calculated MW: 21.4 kDa

**Buffer:** PBS containing 0.09% sodium azide.

**Note:** THIS PRODUCT IS FOR RESEARCH USE ONLY. NOT FOR USE IN DIAGNOSTIC, THERAPEUTIC OR COSMETIC PROCEDURES. NOT FOR HUMAN OR ANIMAL CONSUMPTION.

For Reference Only