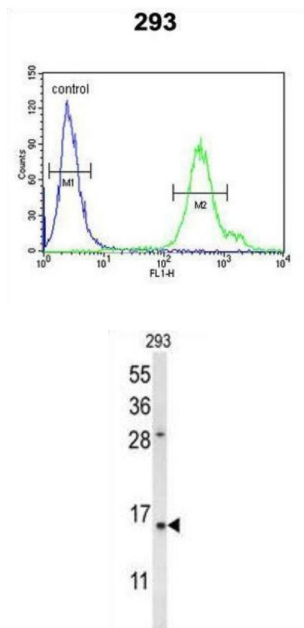


Regenerating Islet Derived Protein 3 Alpha (REG3A) Antibody

Catalogue No.: abx034280



REG3A encodes a pancreatic secretory protein that may be involved in cell proliferation or differentiation. It has similarity to the C-type lectin superfamily. The enhanced expression of this protein is observed during pancreatic inflammation and liver carcinogenesis.

Target:	Regenerating Islet Derived Protein 3 Alpha (REG3A)
Clonality:	Polyclonal
Reactivity:	Human
Tested Applications:	ELISA, WB, FCM
Host:	Rabbit
Recommended dilutions:	WB: 1/1000, FCM: 1/10 - 1/50. Optimal dilutions/concentrations should be determined by the end user.
Conjugation:	Unconjugated
Immunogen:	KLH-conjugated synthetic peptide between 12-39 amino acids from the N-terminal region of human REG3A.
Isotype:	IgG
Form:	Liquid

Datasheet

Version: 3.0.0

Revision date: 20 Aug 2025



Purification: Purified through a protein A column, followed by peptide affinity purification.

Storage: Aliquot and store at -20°C. Avoid repeated freeze/thaw cycles.

UniProt Primary AC: Q06141 ([UniProt](#), [ExPASy](#))

Molecular Weight: Calculated MW: 19.4 kDa

Buffer: PBS containing 0.09% sodium azide.

Note: THIS PRODUCT IS FOR RESEARCH USE ONLY. NOT FOR USE IN DIAGNOSTIC, THERAPEUTIC OR COSMETIC PROCEDURES. NOT FOR HUMAN OR ANIMAL CONSUMPTION.

For Reference Only