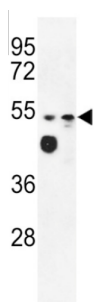
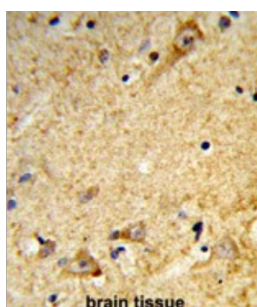


Major Allergen Mal D 2 (MALD2) Antibody

Catalogue No.: abx034283



WB analysis of WiDr and MDA-MB231 cell lysates (35 µg/lane) using MALD2 antibody. MALD2 detection shown by the arrow.



IHC-P analysis with DAB staining of Human brain tissue, using MALD2 antibody.

MALD2 plays a role in the formation of the epithelial barriers. The separation of the endolymphatic and perilymphatic spaces of the organ of Corti from one another by epithelial barriers is required for normal hearing.

Target: Major Allergen Mal D 2 (MALD2)

Clonality: Polyclonal

Reactivity: Human

Tested Applications: ELISA, WB, IHC

Host: Rabbit

Recommended dilutions: WB: 1/1000, IHC-P: 1/50 - 1/100. Not tested in IHC-F. Optimal dilutions/concentrations should be determined by the end user.

Conjugation: Unconjugated

Immunogen: KLH-conjugated synthetic peptide between 386-415 amino acids from the C-terminal region of Human MALD2.

Isotype: IgG

Form: Liquid

Datasheet

Version: 6.0.0
Revision date: 19 Aug 2025



Purification:	Purified through a protein A column, followed by peptide affinity purification.
Storage:	Aliquot and store at 2-8 °C for up to 2 weeks, or -20°C for long term storage. Avoid repeated freeze/thaw cycles.
UniProt Primary AC:	Q8N4S9 (UniProt , ExPASy)
Gene Symbol:	MARVELD2
KEGG:	hsa:153562
String:	9606.ENSP00000323264
Molecular Weight:	Calculated MW: 64.2 kDa
Sequence Fragment:	386-415 AA
Buffer:	PBS containing 0.09% sodium azide.
Specificity:	Reacts with the C terminal region of Human MALD2 protein.
Concentration:	0.25 mg/ml
Note:	THIS PRODUCT IS FOR RESEARCH USE ONLY. NOT FOR USE IN DIAGNOSTIC, THERAPEUTIC OR COSMETIC PROCEDURES. NOT FOR HUMAN OR ANIMAL CONSUMPTION.