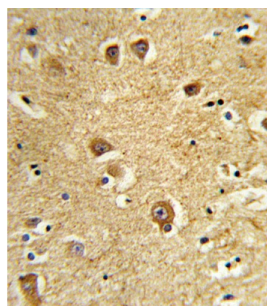
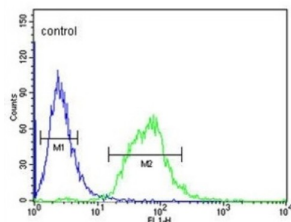


Solute Carrier Family 22 Member 6 (SLC22A6) Antibody

Catalogue No.: abx034289

CEM



The protein is involved in the sodium-dependent transport and excretion of organic anions, some of which are potentially toxic. The encoded protein is an integral membrane protein and may be localized to the basolateral membrane.

Target: Solute Carrier Family 22 Member 6 (SLC22A6)

Clonality: Polyclonal

Reactivity: Human

Tested Applications: ELISA, WB, IHC, FCM

Host: Rabbit

Recommended dilutions: WB: 1/1000, IHC-P: 1/10 - 1/50, FCM: 1/10 - 1/50. Not tested in IHC-F. Optimal dilutions/concentrations should be determined by the end user.

Datasheet

Version: 3.0.0
Revision date: 03 May 2025



Conjugation:	Unconjugated
Immunogen:	KLH-conjugated synthetic peptide between 513-541 amino acids from the C-terminal region of human SLC22A6.
Isotype:	IgG
Form:	Liquid
Purification:	Purified through a protein A column, followed by peptide affinity purification.
Storage:	Aliquot and store at -20°C. Avoid repeated freeze/thaw cycles.
UniProt Primary AC:	Q4U2R8 (UniProt , ExPASy)
String:	9606.ENSP00000367102
Molecular Weight:	Calculated MW: 61.8 kDa
Buffer:	PBS containing 0.09% sodium azide.
Note:	THIS PRODUCT IS FOR RESEARCH USE ONLY. NOT FOR USE IN DIAGNOSTIC, THERAPEUTIC OR COSMETIC PROCEDURES. NOT FOR HUMAN OR ANIMAL CONSUMPTION.