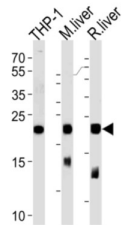
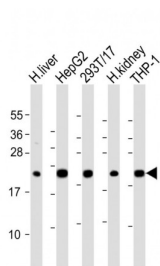


Glutathione Peroxidase 1 (GPX1) Antibody

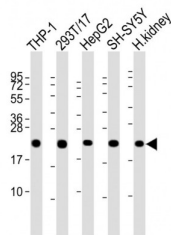
Catalogue No.:abx034320



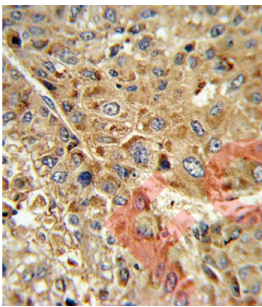
WB analysis of THP-1 cell lysates, mouse liver and rat liver lysates, using GPX1 antibody (1/1000 dilution).



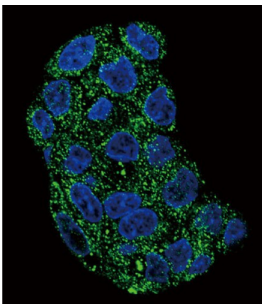
WB analysis of various cell lysates, using GPX1 antibody (1/2000 dilution).



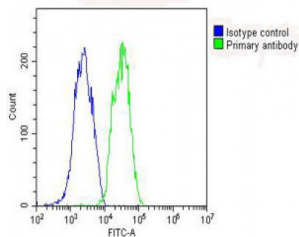
WB analysis of various cell lysates, using GPX1 antibody (1/2000 dilution).



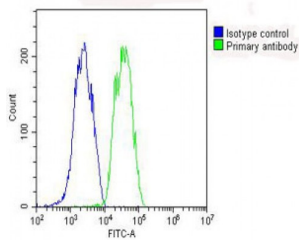
IHC-P analysis of human hepatocarcinoma, with DAB staining.



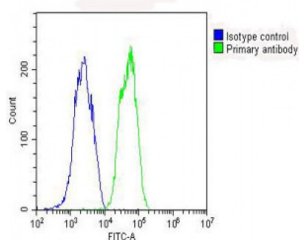
IF analysis of HepG2 cells, using GPX1 antibody and AF488-conjugated goat anti-rabbit IgG. DAPI was used for nuclear staining (blue).



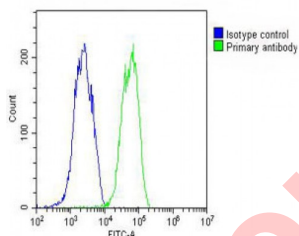
Flow cytometry analysis of HepG2 cells, using GPX1 antibody (1/25 dilution, green) and rabbit IgG isotype control (blue). Secondary antibody was AF488-conjugated goat anti-rabbit IgG.



Flow cytometry analysis of HepG2 cells, using GPX1 antibody (1/25 dilution, green) and rabbit IgG isotype control (blue). Secondary antibody was AF488-conjugated goat anti-rabbit IgG.



Flow cytometry analysis of HepG2 cells, using GPX1 antibody (1/25 dilution, green) and rabbit IgG isotype control (blue). Secondary antibody was AF488-conjugated goat anti-rabbit IgG.



Flow cytometry analysis of HepG2 cells, using GPX1 antibody (1/25 dilution, green) and rabbit IgG isotype control (blue). Secondary antibody was AF488-conjugated goat anti-rabbit IgG.

GPX1 encodes a member of the glutathione peroxidase family. Glutathione peroxidase functions in the detoxification of hydrogen peroxide, and is one of the most important antioxidant enzymes in humans. This protein is one of only a few proteins known in higher vertebrates to contain selenocysteine, which occurs at the active site of glutathione peroxidase and is coded by UGA, that normally functions as a translation termination codon. In addition, this protein is characterized in a polyalanine sequence polymorphism in the N-terminal region, which includes three alleles with five, six or seven alanine (ALA) repeats in this sequence.

Target: Glutathione Peroxidase 1 (GPX1)

Clonality: Polyclonal

Datasheet

Version: 3.0.0
Revision date: 23 Jun 2025



Reactivity:	Human, Mouse, Rat
Tested Applications:	ELISA, WB, IHC, IF/ICC, FCM
Host:	Rabbit
Recommended dilutions:	WB: 1/1000, IHC-P: 1/10 - 1/50, IF/ICC: 1/10 - 1/50, FCM: 1/25. Not tested in IHC-F. Optimal dilutions/concentrations should be determined by the end user.
Conjugation:	Unconjugated
Immunogen:	KLH-conjugated synthetic peptide between 164-193 amino acids from the C-terminal region of human GPX1.
Isotype:	IgG
Form:	Liquid
Purification:	Purified through a protein A column, followed by peptide affinity purification.
Storage:	Aliquot and store at -20°C. Avoid repeated freeze/thaw cycles.
UniProt Primary AC:	P07203 (UniProt , ExPASy)
KEGG:	hsa:2876
String:	9606.ENSP00000407375
Molecular Weight:	Calculated MW: 22.1 kDa
Buffer:	PBS containing 0.09% sodium azide.
Note:	THIS PRODUCT IS FOR RESEARCH USE ONLY. NOT FOR USE IN DIAGNOSTIC, THERAPEUTIC OR COSMETIC PROCEDURES. NOT FOR HUMAN OR ANIMAL CONSUMPTION.