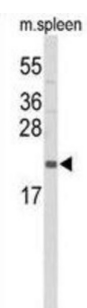
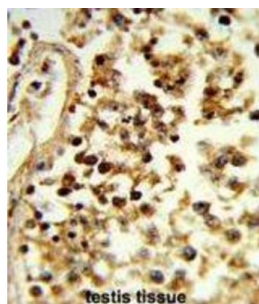
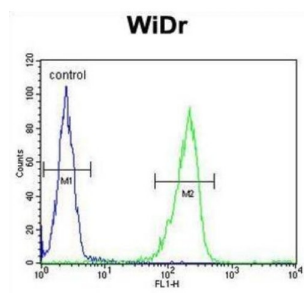


Interleukin 31 (IL31) Antibody

Catalogue No.: abx034351



IL31, which is made principally by activated Th2-type T cells, interacts with a heterodimeric receptor consisting of IL31RA (MIM 609510) and OSMR (MIM 601743) that is constitutively expressed on epithelial cells and keratinocytes. IL31 may be involved in the promotion of allergic skin disorders and in regulating other allergic diseases, such as asthma.

Target: Interleukin 31 (IL31)

Clonality: Polyclonal

Reactivity: Human

Tested Applications: ELISA, WB, IHC, FCM

Host: Rabbit

Recommended dilutions: WB: 1/1000, IHC-P: 1/50 - 1/100, FCM: 1/10 - 1/50. Not tested in IHC-F. Optimal dilutions/concentrations should be determined by the end user.

Datasheet

Version: 3.0.0
Revision date: 04 Jul 2025



| | |
|----------------------------|--------------------------------------------------------------------------------------------------------------------------------------------|
| Conjugation: | Unconjugated |
| Immunogen: | KLH-conjugated synthetic peptide between 13-40 amino acids from the N-terminal region of human IL31. |
| Isotype: | IgG |
| Form: | Liquid |
| Purification: | Purified through a protein A column, followed by peptide affinity purification. |
| Storage: | Aliquot and store at -20°C. Avoid repeated freeze/thaw cycles. |
| UniProt Primary AC: | Q6EBC2 (UniProt , ExPASy) |
| NCBI Accession: | NP_001014358.1 |
| KEGG: | hsa:386653 |
| String: | 9606.ENSP00000366234 |
| Molecular Weight: | Calculated MW: 18.2 kDa |
| Buffer: | PBS containing 0.09% sodium azide. |
| Note: | THIS PRODUCT IS FOR RESEARCH USE ONLY. NOT FOR USE IN DIAGNOSTIC, THERAPEUTIC OR COSMETIC PROCEDURES. NOT FOR HUMAN OR ANIMAL CONSUMPTION. |