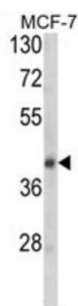
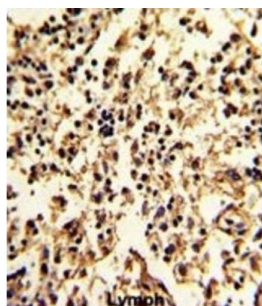
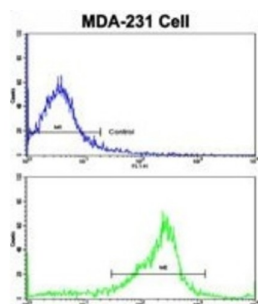


## Serpin Family A Member 9 (SERPINA9) Antibody

Catalogue No.: abx034371



SERPINA9 is a protease inhibitor that inhibits trypsin and trypsin-like serine proteases (in vitro). This protein inhibits plasmin and thrombin with lower efficiency (in vitro).

**Target:** Serpin Family A Member 9 (SERPINA9)

**Clonality:** Polyclonal

**Reactivity:** Human

**Tested Applications:** ELISA, IHC, FCM

**Host:** Rabbit

**Recommended dilutions:** IHC-P: 1/10 - 1/50, FCM: 1/10 - 1/50. Not tested in IHC-F. Optimal dilutions/concentrations should be determined by the end user.

# Datasheet

Version: 3.0.0  
Revision date: 03 Aug 2025



<b>Conjugation:</b>	Unconjugated
<b>Immunogen:</b>	KLH-conjugated synthetic peptide between 194-222 amino acids from the Central region of human SERPINA9.
<b>Isotype:</b>	IgG
<b>Form:</b>	Liquid
<b>Purification:</b>	Purified through a protein A column, followed by peptide affinity purification.
<b>Storage:</b>	Aliquot and store at -20°C. Avoid repeated freeze/thaw cycles.
<b>UniProt Primary AC:</b>	Q86WD7 ( <a href="#">UniProt</a> , <a href="#">ExPASy</a> )
<b>Gene Symbol:</b>	SERPINA9
<b>NCBI Accession:</b>	NP_001035983.1, NP_783866.2
<b>KEGG:</b>	hsa:327657
<b>String:</b>	<a href="#">9606.ENSP00000337133</a>
<b>Molecular Weight:</b>	Calculated MW: 46.6 kDa
<b>Buffer:</b>	PBS containing 0.09% sodium azide.
<b>Note:</b>	THIS PRODUCT IS FOR RESEARCH USE ONLY. NOT FOR USE IN DIAGNOSTIC, THERAPEUTIC OR COSMETIC PROCEDURES. NOT FOR HUMAN OR ANIMAL CONSUMPTION.