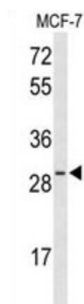


Transcription Cofactor HES-6 (HES6) Antibody

Catalogue No.: abx034401



HES6 is a member of a subfamily of basic helix-loop-helix transcription repressors that have homology to the Drosophila enhancer of split genes. The protein functions as a cofactor, interacting with other transcription factors through a tetrapeptide domain in its C-terminus.

Target:	Transcription Cofactor HES-6 (HES6)
Clonality:	Polyclonal
Reactivity:	Human
Tested Applications:	ELISA, WB
Host:	Rabbit
Recommended dilutions:	WB: 1/1000. Optimal dilutions/concentrations should be determined by the end user.
Conjugation:	Unconjugated
Immunogen:	KLH-conjugated synthetic peptide between 6-34 amino acids from the N-terminal region of human HES6.
Isotype:	IgG
Form:	Liquid
Purification:	Purified through a protein A column, followed by peptide affinity purification.
Storage:	Aliquot and store at -20°C. Avoid repeated freeze/thaw cycles.
UniProt Primary AC:	Q96HZ4 (UniProt , ExPASy)
Gene Symbol:	HES6

Datasheet

Version: 2.0.0

Revision date: 25 Jun 2025



GeneID: [55502](#)

OMIM: [610331](#)

KEGG: hsa:55502

Ensembl: ENSG00000144485

String: [9606.ENSP00000272937](#)

Molecular Weight: Calculated MW: 24.1 kDa

Buffer: PBS containing 0.09% sodium azide.

Note: THIS PRODUCT IS FOR RESEARCH USE ONLY. NOT FOR USE IN DIAGNOSTIC, THERAPEUTIC OR COSMETIC PROCEDURES. NOT FOR HUMAN OR ANIMAL CONSUMPTION.

For Reference Only