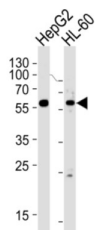
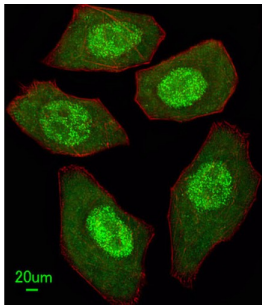


Fanconi Anemia Complementation Group C (FANCC) Antibody

Catalogue No.: abx034404



The Fanconi anemia complementation group (FANC) currently includes FANCA, FANCB, Fanconi Anemia Group C Protein (FANCC), FANCD1 (also called BRCA2), FANCD2, FANCE, FANCF, FANCG, FANCI, FANCL, FANCM and FANCN (also called PALB2). The previously defined group FANCH is the same as FANCA. Fanconi anemia is a genetically heterogeneous recessive disorder characterized by cytogenetic instability, hypersensitivity to DNA crosslinking agents, increased chromosomal breakage, and defective DNA repair. The members of the Fanconi anemia complementation group do not share sequence similarity; they are related by their assembly into a common nuclear protein complex. This protein is for complementation group C.

Target: Fanconi Anemia Complementation Group C (FANCC)

Clonality: Polyclonal

Reactivity: Human

Tested Applications: ELISA, WB, IHC, IF/ICC, FCM

Host: Rabbit

Recommended dilutions: WB: 1/1000, IHC-P: 1/50 - 1/100, IF/ICC: 1/25, FCM: 1/10 - 1/50. Not tested in IHC-F. Optimal dilutions/concentrations should be determined by the end user.

Conjugation: Unconjugated

Immunogen: KLH-conjugated synthetic peptide between 527-555 amino acids from the C-terminal region of human FANCC.

Datasheet

Version: 5.0.0

Revision date: 22 Jul 2025



Isotype:	IgG
Form:	Liquid
Purification:	Purified through a protein A column, followed by peptide affinity purification.
Storage:	Aliquot and store at -20°C. Avoid repeated freeze/thaw cycles.
UniProt Primary AC:	Q00597 (UniProt , ExPASy)
KEGG:	hsa:2176
String:	9606.ENSP00000289081
Molecular Weight:	Calculated MW: 63.4 kDa
Buffer:	PBS containing 0.09% sodium azide.
Note:	THIS PRODUCT IS FOR RESEARCH USE ONLY. NOT FOR USE IN DIAGNOSTIC, THERAPEUTIC OR COSMETIC PROCEDURES. NOT FOR HUMAN OR ANIMAL CONSUMPTION.

For Reference Only