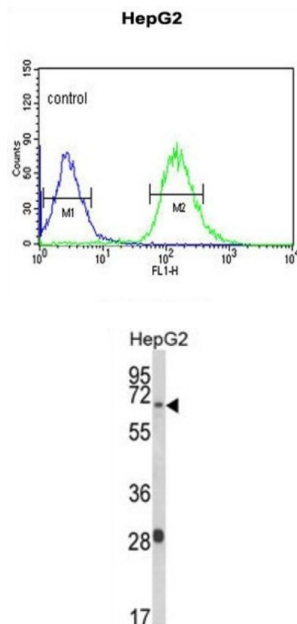


# WW Domain-Containing Adapter Protein With Coiled-Coil (WAC) Antibody

Catalogue No.: abx034415



WAC contains a WW domain, which is a protein module found in a wide range of signaling proteins. This domain mediates protein-protein interactions and binds proteins containing short linear peptide motifs that are proline-rich or contain at least one proline. This gene product shares 94% sequence identity with the WAC protein in mouse, however, its exact function is not known.

<b>Target:</b>	WW Domain-Containing Adapter Protein With Coiled-Coil (WAC)
<b>Clonality:</b>	Polyclonal
<b>Reactivity:</b>	Human
<b>Tested Applications:</b>	ELISA, WB, FCM
<b>Host:</b>	Rabbit
<b>Recommended dilutions:</b>	WB: 1/1000, FCM: 1/10 - 1/50. Optimal dilutions/concentrations should be determined by the end user.
<b>Conjugation:</b>	Unconjugated
<b>Immunogen:</b>	KLH-conjugated synthetic peptide between 284-313 amino acids from the Central region of human WAC.
<b>Isotype:</b>	IgG

# Datasheet

Version: 5.0.0

Revision date: 22 Dec 2025



<b>Form:</b>	Liquid
<b>Purification:</b>	Purified through a protein A column, followed by peptide affinity purification.
<b>Storage:</b>	Aliquot and store at -20°C. Avoid repeated freeze/thaw cycles.
<b>UniProt Primary AC:</b>	Q9BTA9 ( <a href="#">UniProt</a> , <a href="#">ExPASy</a> )
<b>Gene Symbol:</b>	WAC
<b>GeneID:</b>	<a href="#">51322</a>
<b>KEGG:</b>	hsa:51322
<b>String:</b>	<a href="#">9606.ENSP00000346986</a>
<b>Molecular Weight:</b>	Calculated MW: 70.7 kDa
<b>Buffer:</b>	PBS containing 0.09% sodium azide.
<b>Note:</b>	THIS PRODUCT IS FOR RESEARCH USE ONLY. NOT FOR USE IN DIAGNOSTIC, THERAPEUTIC OR COSMETIC PROCEDURES. NOT FOR HUMAN OR ANIMAL CONSUMPTION.

For Reference Only