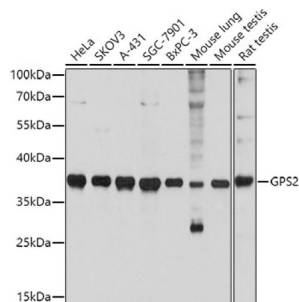
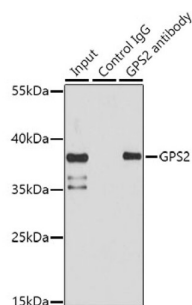


G Protein Pathway Suppressor 2 (GPS2) Antibody

Catalogue No.: abx002842



Western blot analysis of extracts of various cell lines using GPS2 Antibody (1/3000 dilution).



Immunoprecipitation analysis of extracts of HeLa cells (150 µg) using GPS2 Antibody (3 µg). Western blot was performed from the immunoprecipitate using GPS2 Antibody (1/1000 dilution).

GPS2 Antibody is a Rabbit Polyclonal antibody against GPS2. This gene encodes a protein involved in G protein-mitogen-activated protein kinase (MAPK) signaling cascades. When overexpressed in mammalian cells, this gene could potentially suppress a RAS- and MAPK-mediated signal and interfere with JNK activity, suggesting that the function of this gene may be signal repression. The encoded protein is an integral subunit of the NCOR1-HDAC3 (nuclear receptor corepressor 1-histone deacetylase 3) complex, and it was shown that the complex inhibits JNK activation through this subunit and thus could potentially provide an alternative mechanism for hormone-mediated antagonism of AP1 (activator protein 1) function.

Target: G Protein Pathway Suppressor 2 (GPS2)

Clonality: Polyclonal

Reactivity: Human, Mouse, Rat

Tested Applications: WB, IP

Host: Rabbit

Recommended dilutions: WB: 1/500 - 1/2000, IP: 1/20 - 1/50. Optimal dilutions/concentrations should be determined by the end user.

Conjugation: Unconjugated

Immunogen: A synthetic peptide corresponding to mouse GPS2

Isotype: IgG

Datasheet

Version: 4.0.0
Revision date: 22 Jun 2025



Form:	Liquid
Purification:	Purified by affinity chromatography.
Storage:	Aliquot and store at -20°C. Avoid repeated freeze/thaw cycles.
UniProt Primary AC:	Q13227 (UniProt , ExPASy)
Gene Symbol:	GPS2
GeneID:	2874
NCBI Accession:	NP_062700.2
KEGG:	hsa:2874
String:	9606.ENSP00000370104
Molecular Weight:	Calculated MW: 20 kDa Observed MW: 37 kDa
Buffer:	PBS, pH 7.3, containing 0.01% thiomersal, 50% glycerol.
Concentration:	1 mg/ml
Note:	THIS PRODUCT IS FOR RESEARCH USE ONLY. NOT FOR USE IN DIAGNOSTIC, THERAPEUTIC OR COSMETIC PROCEDURES. NOT FOR HUMAN OR ANIMAL CONSUMPTION.