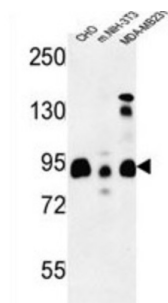


SH3-Containing GRB2-Like Protein 3-Interacting Protein 1 (SGIP1) Antibody

Catalogue No.: abx034420



SGIP1 functions as an endocytic protein that affects signaling by receptors in neuronal systems involved in energy homeostasis via its interaction with endophilins (see SH3GL3; MIM 603362) (Trevaskis et al., 2005 [PubMed 15919751] and Uezu et al., 2007 [PubMed 17626015]).

Target:	SH3-Containing GRB2-Like Protein 3-Interacting Protein 1 (SGIP1)
Clonality:	Polyclonal
Reactivity:	Human, Mouse
Tested Applications:	ELISA, WB
Host:	Rabbit
Recommended dilutions:	WB: 1/1000. Optimal dilutions/concentrations should be determined by the end user.
Conjugation:	Unconjugated
Immunogen:	KLH-conjugated synthetic peptide between 1-30 amino acids from the N-terminal region of human SGIP1.
Isotype:	IgG
Form:	Liquid
Purification:	Purified through a protein A column, followed by peptide affinity purification.
Storage:	Aliquot and store at -20°C. Avoid repeated freeze/thaw cycles.
UniProt Primary AC:	Q9BQI5 (UniProt , ExPASy)

Datasheet

Version: 4.0.0

Revision date: 13 Aug 2025



Gene Symbol: SGIP1

String: [9606.ENSP00000360076](#)

Molecular Weight: Calculated MW: 89.1 kDa

Buffer: PBS containing 0.09% sodium azide.

Specificity: Predicted to react with Rat SGIP1.

Note: THIS PRODUCT IS FOR RESEARCH USE ONLY. NOT FOR USE IN DIAGNOSTIC, THERAPEUTIC OR COSMETIC PROCEDURES. NOT FOR HUMAN OR ANIMAL CONSUMPTION.

For Reference Only