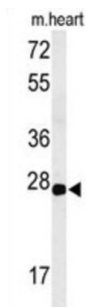


Claudin 4 (CLDN4) Antibody

Catalogue No.: abx034442



CLDN4 is an integral membrane protein, which belongs to the claudin family. The protein is a component of tight junction strands and may play a role in internal organ development and function during pre and postnatal life.

Target: Claudin 4 (CLDN4)

Clonality: Polyclonal

Reactivity: Human, Mouse

Tested Applications: ELISA, WB

Host: Rabbit

Recommended dilutions: WB: 1/1000. Optimal dilutions/concentrations should be determined by the end user.

Conjugation: Unconjugated

Immunogen: KLH-conjugated synthetic peptide between 171-197 amino acids from the C-terminal region of human CLDN4.

Isotype: IgG

Form: Liquid

Purification: Purified through a protein A column, followed by peptide affinity purification.

Storage: Aliquot and store at -20°C. Avoid repeated freeze/thaw cycles.

UniProt Primary AC: O14493 ([UniProt](#), [ExPASy](#))

Gene Symbol: CLDN4

Datasheet

Version: 4.0.0

Revision date: 24 Jun 2025



KEGG: hsa:1364

String: [9606.ENSP00000409544](#)

Molecular Weight: Calculated MW: 22.1 kDa

Buffer: PBS containing 0.09% sodium azide.

Note: THIS PRODUCT IS FOR RESEARCH USE ONLY. NOT FOR USE IN DIAGNOSTIC, THERAPEUTIC OR COSMETIC PROCEDURES. NOT FOR HUMAN OR ANIMAL CONSUMPTION.

For Reference Only