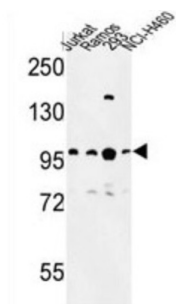


## B-Cell Lymphoma/Leukaemia 11A (BCL11A) Antibody

Catalogue No.: abx034450



BCL11A is a C2H2 type zinc-finger protein by its similarity to the mouse Bcl11a/Evi9 protein. The corresponding mouse gene is a common site of retroviral integration in myeloid leukemia, and may function as a leukemia disease gene, in part, through its interaction with BCL6.

**Target:** B-Cell Lymphoma/Leukaemia 11A (BCL11A)

**Clonality:** Polyclonal

**Reactivity:** Human

**Tested Applications:** ELISA, WB

**Host:** Rabbit

**Recommended dilutions:** WB: 1/1000. Optimal dilutions/concentrations should be determined by the end user.

**Conjugation:** Unconjugated

**Immunogen:** KLH-conjugated synthetic peptide between 806-835 amino acids from the C-terminal region of human BCL11A.

**Isotype:** IgG

**Form:** Liquid

**Purification:** Purified through a protein A column, followed by peptide affinity purification.

**Storage:** Aliquot and store at -20°C. Avoid repeated freeze/thaw cycles.

**UniProt Primary AC:** Q9H165 ([UniProt](#), [ExPASy](#))

**Gene Symbol:** BCL11A

# Datasheet

Version: 2.0.0

Revision date: 03 Jun 2025



**String:** [9606.ENSF00000338774](#)

**Molecular Weight:** Calculated MW: 91.2 kDa

**Buffer:** PBS containing 0.09% sodium azide.

**Note:** THIS PRODUCT IS FOR RESEARCH USE ONLY. NOT FOR USE IN DIAGNOSTIC, THERAPEUTIC OR COSMETIC PROCEDURES. NOT FOR HUMAN OR ANIMAL CONSUMPTION.

For Reference Only