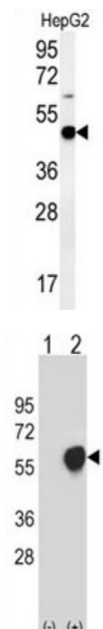


Pyruvate Dehydrogenase E1 Component Subunit Alpha, Somatic Form, Mitochondrial (PDHA1) Antibody

Catalogue No.: abx034458



This product is currently in development. The lead time for this product may be several months. Please contact us at info@abbexa.com for an updated lead time before purchasing this product.

This product is currently in development. The lead time for this product may be several months. Please contact us at info@abbexa.com for an updated lead time before purchasing this product.

PDHA1 Antibody is a Rabbit Polyclonal antibody against PDHA1.

Target: Pyruvate Dehydrogenase E1 Component Subunit Alpha, Somatic Form, Mitochondrial (PDHA1)

Clonality: Polyclonal

Reactivity: Human

Tested Applications: ELISA, WB

Host: Rabbit

Recommended dilutions: WB: 1/1000. Optimal dilutions/concentrations should be determined by the end user.

Conjugation: Unconjugated

Datasheet

Version: 3.0.0
Revision date: 21 Aug 2025



Immunogen:	Recombinant protein encoding human PDHA1.
Isotype:	IgG
Form:	Liquid
Purification:	Purified through a protein A column, followed by recombinant protein affinity purification.
Storage:	Aliquot and store at -20°C. Avoid repeated freeze/thaw cycles.
UniProt Primary AC:	P08559 (UniProt , ExPASy)
KEGG:	hsa:5160
String:	9606.ENSP00000369134
Molecular Weight:	Calculated MW: 43.3 kDa
Buffer:	PBS containing 0.09% sodium azide.
Note:	THIS PRODUCT IS FOR RESEARCH USE ONLY. NOT FOR USE IN DIAGNOSTIC, THERAPEUTIC OR COSMETIC PROCEDURES. NOT FOR HUMAN OR ANIMAL CONSUMPTION.

For Reference Only