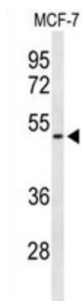


# Feline Leukemia Virus Subgroup C Receptor-Related Protein 2 (FLVC2) Antibody

Catalogue No.: abx034469



The FLVCR2 gene encodes a transmembrane protein that belongs to the major facilitator superfamily of secondary carriers that transport small solutes in response to chemiosmotic ion gradients, such as calcium.

<b>Target:</b>	Feline Leukemia Virus Subgroup C Receptor-Related Protein 2 (FLVC2)
<b>Clonality:</b>	Polyclonal
<b>Reactivity:</b>	Human
<b>Tested Applications:</b>	ELISA, WB
<b>Host:</b>	Rabbit
<b>Recommended dilutions:</b>	WB: 1/1000. Optimal dilutions/concentrations should be determined by the end user.
<b>Conjugation:</b>	Unconjugated
<b>Immunogen:</b>	KLH-conjugated synthetic peptide between 478-507 amino acids from the C-terminal region of human FLVC2.
<b>Isotype:</b>	IgG
<b>Form:</b>	Liquid
<b>Purification:</b>	Purified through a protein A column, followed by peptide affinity purification.
<b>Storage:</b>	Aliquot and store at -20°C. Avoid repeated freeze/thaw cycles.
<b>UniProt Primary AC:</b>	Q9UPI3 ( <a href="#">UniProt</a> , <a href="#">ExPASy</a> )
<b>Gene Symbol:</b>	FLVCR2

# Datasheet

Version: 4.0.0

Revision date: 02 Jun 2025



**String:** [9606.ENSF00000238667](#)

**Molecular Weight:** Calculated MW: 57.2 kDa

**Buffer:** PBS containing 0.09% sodium azide.

**Note:** THIS PRODUCT IS FOR RESEARCH USE ONLY. NOT FOR USE IN DIAGNOSTIC, THERAPEUTIC OR COSMETIC PROCEDURES. NOT FOR HUMAN OR ANIMAL CONSUMPTION.

For Reference Only