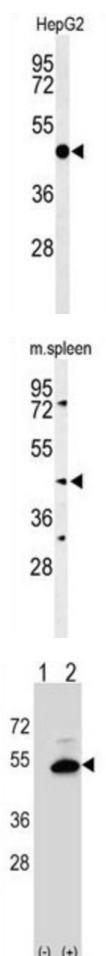


Phosphatidylcholine (SGMS2) Antibody

Catalogue No.: abx034491



Sphingomyelin, a major component of cell and Golgi membranes, is made by the transfer of phosphocholine from phosphatidylcholine onto ceramide, with diacylglycerol as a side product. SGMS2 is an enzyme that catalyzes this reaction primarily at the cell membrane. The synthesis is reversible, and this enzyme can catalyze the reaction in either direction. This protein is required for cell growth.

Target: Phosphatidylcholine (SGMS2)

Clonality: Polyclonal

Reactivity: Human, Mouse

Tested Applications: ELISA, WB

Host: Rabbit

Recommended dilutions: WB: 1/1000. Optimal dilutions/concentrations should be determined by the end user.

Datasheet

Version: 4.0.0
Revision date: 10 Jun 2025



Conjugation:	Unconjugated
Immunogen:	KLH-conjugated synthetic peptide between 338-365 amino acids from the C-terminal region of human SGMS2.
Isotype:	IgG
Form:	Liquid
Purification:	Purified through a protein A column, followed by peptide affinity purification.
Storage:	Aliquot and store at -20°C. Avoid repeated freeze/thaw cycles.
UniProt Primary AC:	Q8NHU3 (UniProt , ExPASy)
Gene Symbol:	SGMS2
KEGG:	hsa:166929
String:	9606.ENSP00000378176
Molecular Weight:	Calculated MW: 42.3 kDa
Buffer:	PBS containing 0.09% sodium azide.
Specificity:	Predicted to react with Rat and Monkey SGMS2.
Note:	THIS PRODUCT IS FOR RESEARCH USE ONLY. NOT FOR USE IN DIAGNOSTIC, THERAPEUTIC OR COSMETIC PROCEDURES. NOT FOR HUMAN OR ANIMAL CONSUMPTION.