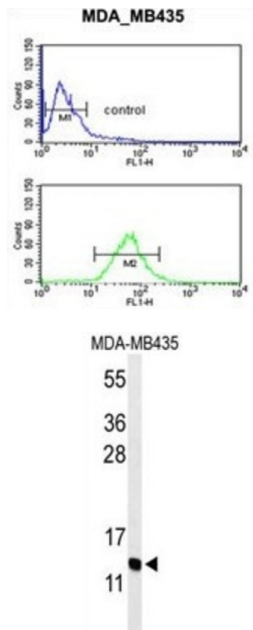


Progonadoliberin 2 (GNRH2) Antibody

Catalogue No.: abx034512



The protein encoded by this gene is a preproprotein that is cleaved to form a secreted 10 aa peptide hormone. The secreted decapeptide regulates reproduction in females by stimulating the secretion of both luteinizing and follicle-stimulating hormones.

Target: Progonadoliberin 2 (GNRH2)

Clonality: Polyclonal

Reactivity: Human

Tested Applications: ELISA, WB, FCM

Host: Rabbit

Recommended dilutions: WB: 1/1000, FCM: 1/10 - 1/50. Optimal dilutions/concentrations should be determined by the end user.

Conjugation: Unconjugated

Immunogen: KLH-conjugated synthetic peptide between 26-53 amino acids from the Central region of human GNRH2.

Isotype: IgG

Form: Liquid

Datasheet

Version: 4.0.0
Revision date: 06 Mar 2025



Purification:	Purified through a protein A column, followed by peptide affinity purification.
Storage:	Aliquot and store at -20°C. Avoid repeated freeze/thaw cycles.
UniProt Primary AC:	O43555 (UniProt , ExPASy)
Gene Symbol:	GNRH2
KEGG:	hsa:2797
String:	9606.ENSP00000245983
Molecular Weight:	Calculated MW: 12.9 kDa
Buffer:	PBS containing 0.09% sodium azide.
Note:	THIS PRODUCT IS FOR RESEARCH USE ONLY. NOT FOR USE IN DIAGNOSTIC, THERAPEUTIC OR COSMETIC PROCEDURES. NOT FOR HUMAN OR ANIMAL CONSUMPTION.

For Reference Only