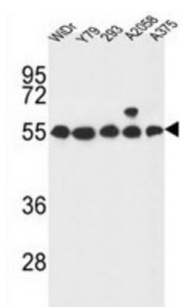
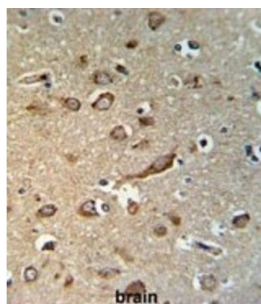


Integral Membrane Protein GPR180 (GPR180) Antibody

Catalogue No.: abx034515



This gene encodes a protein that is a member of the G protein-coupled receptor superfamily. This protein is produced predominantly in vascular smooth muscle cells and may play an important role in the regulation of vascular remodeling.

Target: Integral Membrane Protein GPR180 (GPR180)

Clonality: Polyclonal

Reactivity: Human

Tested Applications: ELISA, WB, IHC

Host: Rabbit

Recommended dilutions: WB: 1/1000, IHC-P: 1/50 - 1/100. Not tested in IHC-F. Optimal dilutions/concentrations should be determined by the end user.

Conjugation: Unconjugated

Immunogen: KLH-conjugated synthetic peptide between 119-147 amino acids from the Central region of human GPR180.

Isotype: IgG

Form: Liquid

Datasheet

Version: 1.0.0
Revision date: 29 Sep 2025



Purification:	Purified through a protein A column, followed by peptide affinity purification.
Storage:	Aliquot and store at -20°C. Avoid repeated freeze/thaw cycles.
UniProt Primary AC:	Q86V85 (UniProt , ExPASy)
Gene Symbol:	GPR180
KEGG:	hsa:160897
String:	9606.ENSP00000366157
Molecular Weight:	Calculated MW: 49.4 kDa
Buffer:	PBS containing 0.09% sodium azide.
Note:	THIS PRODUCT IS FOR RESEARCH USE ONLY. NOT FOR USE IN DIAGNOSTIC, THERAPEUTIC OR COSMETIC PROCEDURES. NOT FOR HUMAN OR ANIMAL CONSUMPTION.

For Reference Only