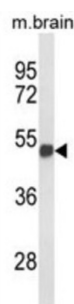
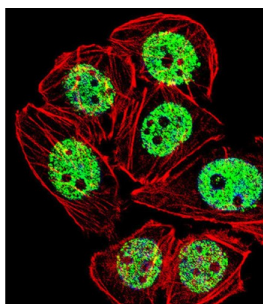
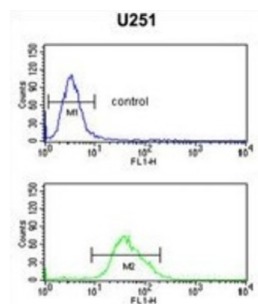


Forkhead Box Protein G1 (FOXG1) Antibody

Catalogue No.: abx034518



This gene belongs to the forkhead family of transcription factors which is characterized by a distinct forkhead domain. The specific function of this gene has not yet been determined; however, it may play a role in the development of the brain and telencephalon.

Target: Forkhead Box Protein G1 (FOXG1)

Clonality: Polyclonal

Reactivity: Human, Mouse

Tested Applications: ELISA, WB, IF/ICC, FCM

Host: Rabbit

Recommended dilutions: WB: 1/1000, IF/ICC: 1/10 - 1/50, FCM: 1/10 - 1/50. Optimal dilutions/concentrations should be determined by the end user.

Datasheet

Version: 4.0.0
Revision date: 27 Jun 2025



Conjugation:	Unconjugated
Immunogen:	KLH-conjugated synthetic peptide between 225-252 amino acids from the Central region of human FOXG1.
Isotype:	IgG
Form:	Liquid
Purification:	Purified through a protein A column, followed by peptide affinity purification.
Storage:	Aliquot and store at -20°C. Avoid repeated freeze/thaw cycles.
UniProt Primary AC:	P55316 (UniProt , ExPASy)
KEGG:	hsa:2290
String:	9606.ENSP00000339004
Molecular Weight:	Calculated MW: 52.4 kDa
Buffer:	PBS containing 0.09% sodium azide.
Specificity:	Predicted to react with Rat, Chicken, Drosophila and Xenopus FOXG1.
Note:	THIS PRODUCT IS FOR RESEARCH USE ONLY. NOT FOR USE IN DIAGNOSTIC, THERAPEUTIC OR COSMETIC PROCEDURES. NOT FOR HUMAN OR ANIMAL CONSUMPTION.