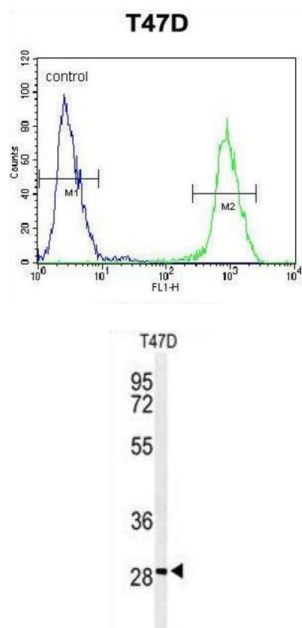


## Rho GTPase-Activating Protein 19 (RHG19) Antibody

Catalogue No.: abx034526



This product is currently in development. The lead time for this product may be several months. Please contact us at [info@abbexa.com](mailto:info@abbexa.com) for an updated lead time before purchasing this product.

This product is currently in development. The lead time for this product may be several months. Please contact us at [info@abbexa.com](mailto:info@abbexa.com) for an updated lead time before purchasing this product.

Members of the ARHGAP family, such as ARHGAP19, encode negative regulators of Rho GTPases (see RHOA; MIM 165390), which are involved in cell migration, proliferation, and differentiation, actin remodeling, and G1 cell cycle progression.

**Target:** Rho GTPase-Activating Protein 19 (RHG19)

**Clonality:** Polyclonal

**Reactivity:** Human

**Tested Applications:** ELISA, WB, FCM

**Host:** Rabbit

**Recommended dilutions:** WB: 1/1000, FCM: 1/10 - 1/50. Optimal dilutions/concentrations should be determined by the end user.

**Conjugation:** Unconjugated

# Datasheet

Version: 3.0.0

Revision date: 27 Aug 2025



<b>Immunogen:</b>	KLH-conjugated synthetic peptide between 195-224 amino acids from the Central region of human RHG19.
<b>Isotype:</b>	IgG
<b>Form:</b>	Liquid
<b>Purification:</b>	Purified through a protein A column, followed by peptide affinity purification.
<b>Storage:</b>	Aliquot and store at -20°C. Avoid repeated freeze/thaw cycles.
<b>UniProt Primary AC:</b>	Q14CB8 ( <a href="#">UniProt</a> , <a href="#">ExPASy</a> )
<b>KEGG:</b>	hsa:84986
<b>String:</b>	<a href="#">9606.ENSP00000351333</a>
<b>Molecular Weight:</b>	Calculated MW: 55.8 kDa
<b>Buffer:</b>	PBS containing 0.09% sodium azide.
<b>Note:</b>	THIS PRODUCT IS FOR RESEARCH USE ONLY. NOT FOR USE IN DIAGNOSTIC, THERAPEUTIC OR COSMETIC PROCEDURES. NOT FOR HUMAN OR ANIMAL CONSUMPTION.

For Reference Only