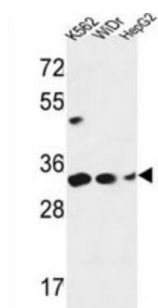
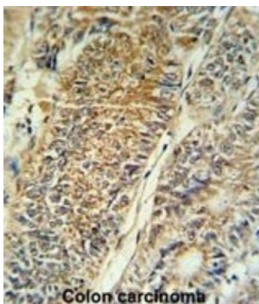
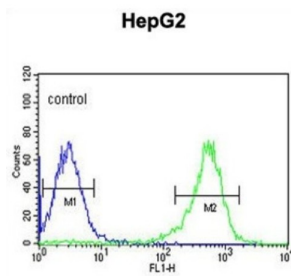


# Pyrroline-5-Carboxylate Reductase 1, Mitochondrial (PYCR1) Antibody

Catalogue No.: abx034562



This gene encodes an enzyme that catalyzes the NAD (P) H-dependent conversion of pyrroline-5-carboxylate to proline. This enzyme may also play a physiologic role in the generation of NADP (+) in some cell types. The protein forms a homopolymer and localizes to the mitochondrion.

**Target:** Pyrroline-5-Carboxylate Reductase 1, Mitochondrial (PYCR1)

**Clonality:** Polyclonal

**Reactivity:** Human

**Tested Applications:** ELISA, WB, IHC, FCM

**Host:** Rabbit

**Recommended dilutions:** WB: 1/1000, IHC-P: 1/50 - 1/100, FCM: 1/10 - 1/50. Not tested in IHC-F. Optimal dilutions/concentrations should be determined by the end user.

# Datasheet

Version: 5.0.0  
Revision date: 10 Mar 2025



<b>Conjugation:</b>	Unconjugated
<b>Immunogen:</b>	KLH-conjugated synthetic peptide between 291-319 amino acids from the C-terminal region of human PYCR1.
<b>Isotype:</b>	IgG
<b>Form:</b>	Liquid
<b>Purification:</b>	Purified through a protein A column, followed by peptide affinity purification.
<b>Storage:</b>	Aliquot and store at -20°C. Avoid repeated freeze/thaw cycles.
<b>UniProt Primary AC:</b>	P32322 ( <a href="#">UniProt</a> , <a href="#">ExPASy</a> )
<b>Gene Symbol:</b>	PYCR1
<b>KEGG:</b>	hsa:5831
<b>String:</b>	<a href="#">9606.ENSP00000384949</a>
<b>Molecular Weight:</b>	Calculated MW: 33.4 kDa
<b>Buffer:</b>	PBS containing 0.09% sodium azide.
<b>Note:</b>	THIS PRODUCT IS FOR RESEARCH USE ONLY. NOT FOR USE IN DIAGNOSTIC, THERAPEUTIC OR COSMETIC PROCEDURES. NOT FOR HUMAN OR ANIMAL CONSUMPTION.