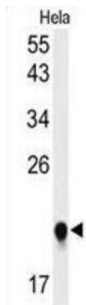
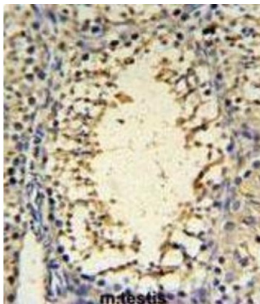


U3 Small Nucleolar Ribonucleoprotein Protein IMP3 (IMP3) Antibody

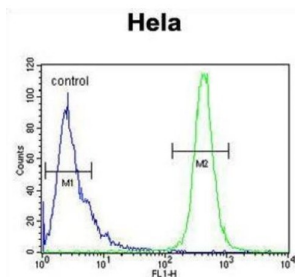
Catalogue No.: abx034563



WB analysis of HeLa cell lysates (35 µg).



IHC-P analysis of mouse testis tissue, with DAB staining.



Flow cytometric analysis of HeLa cells (green) compared to a negative control cell (blue), using IMP3 antibody and FITC-conjugated goat anti-rabbit secondary antibody.

This gene encodes the human homolog of the yeast Imp3 protein. The protein localizes to the nucleoli and interacts with the U3 snoRNP complex. The protein contains an S4 domain.

Target: U3 Small Nucleolar Ribonucleoprotein Protein IMP3 (IMP3)

Clonality: Polyclonal

Reactivity: Human, Mouse

Tested Applications: ELISA, WB, IHC, FCM

Host: Rabbit

Recommended dilutions: WB: 1/1000, IHC-P: 1/50 - 1/100, FCM: 1/10 - 1/50. Not tested in IHC-F. Optimal dilutions/concentrations should be determined by the end user.

Datasheet

Version: 3.0.0
Revision date: 03 Sep 2025



Conjugation:	Unconjugated
Immunogen:	KLH-conjugated synthetic peptide between 156-184 amino acids from the C-terminal region of human IMP3.
Isotype:	IgG
Form:	Liquid
Purification:	Purified through a protein A column, followed by peptide affinity purification.
Storage:	Aliquot and store at -20°C. Avoid repeated freeze/thaw cycles.
UniProt Primary AC:	Q9NV31 (UniProt , ExPASy)
Gene Symbol:	IMP3
String:	9606.ENSP00000326981
Molecular Weight:	Calculated MW: 21.9 kDa
Buffer:	PBS containing 0.09% sodium azide.
Note:	THIS PRODUCT IS FOR RESEARCH USE ONLY. NOT FOR USE IN DIAGNOSTIC, THERAPEUTIC OR COSMETIC PROCEDURES. NOT FOR HUMAN OR ANIMAL CONSUMPTION.