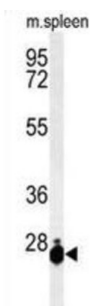
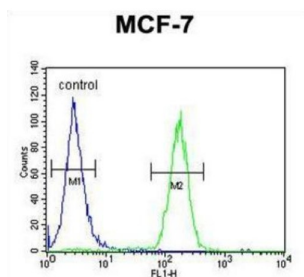


THO Complex 7 (THOC7) Antibody

Catalogue No.: abx034566



WB analysis of Mouse spleen tissue lysate (35 µg/lane), using THOC7 Antibody.



FCM analysis of MCF-7 cells (right histogram) compared to a negative control cell (left histogram), using THOC7 Antibody. FITC-conjugated Goat-anti-Rabbit secondary antibody was used for the analysis.

THOC7 Antibody is a Rabbit Polyclonal antibody against THOC7.

Target: THO Complex 7 (THOC7)

Clonality: Polyclonal

Reactivity: Human, Mouse

Tested Applications: ELISA, WB, FCM

Host: Rabbit

Recommended dilutions: WB: 1/1000, FCM: 1/10 - 1/50. Optimal dilutions/concentrations should be determined by the end user.

Conjugation: Unconjugated

Immunogen: KLH-conjugated synthetic peptide between 138-166 amino acids from the C-terminal region of human THOC7.

Isotype: IgG

Form: Liquid

Purification: Purified through a protein A column, followed by peptide affinity purification.

Datasheet

Version: 5.0.0
Revision date: 14 Sep 2025



Storage: Aliquot and store at -20°C. Avoid repeated freeze/thaw cycles.

UniProt Primary AC: Q6I9Y2 ([UniProt](#), [ExPASy](#))

NCBI Accession: NP_079351.2

KEGG: hsa:80145

String: [9606.ENSP00000295899](#)

Molecular Weight: Calculated MW: 23.7 kDa

Buffer: PBS containing 0.09% sodium azide.

Specificity: Predicted to react with Cow THOC7.

Concentration: 0.5 mg/ml

Note: THIS PRODUCT IS FOR RESEARCH USE ONLY. NOT FOR USE IN DIAGNOSTIC, THERAPEUTIC OR COSMETIC PROCEDURES. NOT FOR HUMAN OR ANIMAL CONSUMPTION.

For Reference Only