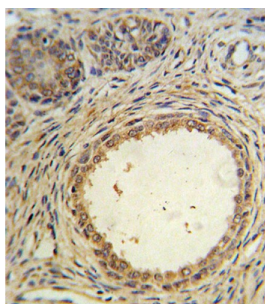


Muellerian-Inhibiting Factor (AMH) Antibody

Catalogue No.: abx034580



Anti Muellerian-Inhibiting Factor (AMH) is a member of the TGF beta superfamily. It is secreted as a homodimeric 140kD disulphide linked precursor that is cleaved to release the mature 30kD homodimer. Originally classified as a foetal testicular hormone that inhibits Anti-Mullerian duct development, AMH is expressed post natally by immature Sertoli cells, and to a lesser degree by granulosa cells. AMH plays a role in testicular differentiation and in the regulation of ovarian follicle growth.

Target: Muellerian-Inhibiting Factor (AMH)

Clonality: Polyclonal

Reactivity: Human, Mouse

Tested Applications: ELISA, WB, IHC, FCM

Host: Rabbit

Recommended dilutions: WB: 1/1000 - 1/2000, IHC-P: 1/25, FCM: 1/25. Not tested in IHC-F. Optimal dilutions/concentrations should be determined by the end user.

Datasheet

Version: 1.0.0

Revision date: 24 May 2025



| | |
|----------------------------|--|
| Conjugation: | Unconjugated |
| Immunogen: | KLH-conjugated synthetic peptide between 424-451 amino acids from the Central region of human AMH. |
| Isotype: | IgG |
| Form: | Liquid |
| Purification: | Purified through a protein A column, followed by peptide affinity purification. |
| Storage: | Aliquot and store at -20°C. Avoid repeated freeze/thaw cycles. |
| UniProt Primary AC: | P03971 (UniProt , ExPASy) |
| NCBI Accession: | NP_000470.2 |
| KEGG: | hsa:268 |
| String: | 9606.ENSP00000221496 |
| Molecular Weight: | Calculated MW: 59.2 kDa |
| Buffer: | PBS containing 0.09% sodium azide. |
| Note: | THIS PRODUCT IS FOR RESEARCH USE ONLY. NOT FOR USE IN DIAGNOSTIC, THERAPEUTIC OR COSMETIC PROCEDURES. NOT FOR HUMAN OR ANIMAL CONSUMPTION. |