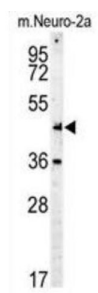
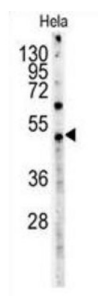
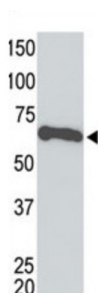


Myc Tag Antibody

Catalogue No.: abx034621



Epitope Tags consisting of short sequences recognized by well-characterized monoclonal antibodies have been widely used in the study of protein expression in various systems, such as the HA Tag (YPYDVPDYA) and Myc Tag (AEEQKLISEEDLLRKRREQLKHKLE).

Target:	Myc Tag
Clonality:	Monoclonal
Reactivity:	General
Tested Applications:	ELISA, WB
Host:	Mouse

Recommended dilutions: WB: 1/2000. Optimal dilutions/concentrations should be determined by the end user.

Datasheet

Version: 2.0.0

Revision date: 29 Jun 2025



Conjugation:	Unconjugated
Immunogen:	KLH conjugated synthetic peptide encoding c-Myc tag (AEEQKLISEEDLLRKRREQLKHKLE)
Isotype:	IgG ₁
Form:	Liquid
Purification:	Purified through a protein G column, eluted with high and low pH buffers and neutralized immediately, followed by dialysis against PBS.
Storage:	Aliquot and store at -20°C. Avoid repeated freeze/thaw cycles.
Buffer:	PBS containing 0.09% sodium azide.
Note:	THIS PRODUCT IS FOR RESEARCH USE ONLY. NOT FOR USE IN DIAGNOSTIC, THERAPEUTIC OR COSMETIC PROCEDURES. NOT FOR HUMAN OR ANIMAL CONSUMPTION.

For Reference Only