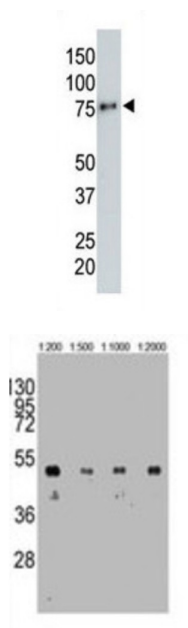


HA Tag Antibody

Catalogue No.: abx034622



Epitope Tags consisting of short sequences recognized by well-characterized monoclonal antibodies have been widely used in the study of protein expression in various systems, such as the HA Tag (YPYDVPDYA) and Myc Tag (AEEQKLISEEDLLKRREQLKHKLE).

Target: HA Tag

Clonality: Monoclonal

Reactivity: Human

Tested Applications: ELISA, WB

Host: Mouse

Recommended dilutions: WB: 1/8000. Optimal dilutions/concentrations should be determined by the end user.

Conjugation: Unconjugated

Immunogen: KLH conjugated synthetic peptide encoding HA tag (YPYDVPDYA)

Isotype: IgG_{2b}

Form: Liquid

Datasheet

Version: 3.0.0

Revision date: 24 Jun 2025



Purification: Purified by protein G and Ni-NTA nickel affinity chromatography, followed by dialysis against PBS.

Storage: Aliquot and store at -20°C. Avoid repeated freeze/thaw cycles.

Buffer: PBS containing 0.09% sodium azide.

Note: THIS PRODUCT IS FOR RESEARCH USE ONLY. NOT FOR USE IN DIAGNOSTIC, THERAPEUTIC OR COSMETIC PROCEDURES. NOT FOR HUMAN OR ANIMAL CONSUMPTION.

For Reference Only