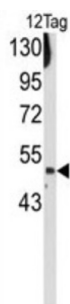


FLAG Tag Antibody

Catalogue No.: abx034629



FLAG Tag Antibody is a Rabbit Polyclonal against FLAG Tag.

Target: FLAG Tag

Clonality: Polyclonal

Reactivity: Human

Tested Applications: ELISA, WB

Host: Rabbit

Recommended dilutions: WB: 1/2000. Optimal dilutions/concentrations should be determined by the end user.

Conjugation: Unconjugated

Immunogen: KLH conjugated synthetic peptide (CDYKDDDDKDYKDDDDK)

Isotype: IgG

Form: Liquid

Purification: Purified through a protein G column, eluted with high and low pH buffers and neutralized immediately, followed by dialysis against PBS.

Storage: Aliquot and store at -20°C. Avoid repeated freeze/thaw cycles.

Buffer: PBS containing 0.09% sodium azide.

Note: THIS PRODUCT IS FOR RESEARCH USE ONLY. NOT FOR USE IN DIAGNOSTIC, THERAPEUTIC OR COSMETIC PROCEDURES. NOT FOR HUMAN OR ANIMAL CONSUMPTION.