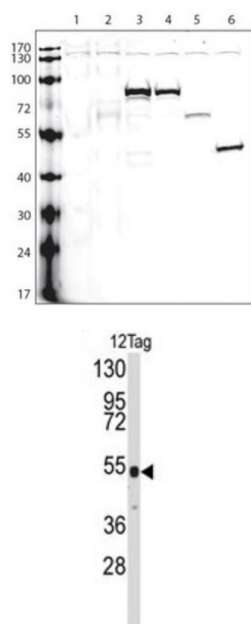


V5 Tag Antibody

Catalogue No.: abx034630



Epitope tags consisting of short sequences recognized by well-characterized antibodies have been widely used in the study of protein expression in various systems. The V5 epitope tag is composed of a 14 residue peptide, GKIPNPLLGLDST, derived from a small epitope (Pk) present on the P and V proteins of the paramyxovirus of simian virus 5 (SV5).

Target: V5 Tag

Clonality: Polyclonal

Reactivity: General

Tested Applications: ELISA, WB

Host: Rabbit

Recommended dilutions: WB: 1/1000. Optimal dilutions/concentrations should be determined by the end user.

Conjugation: Unconjugated

Immunogen: KLH conjugated synthetic peptide encoding the V5 tag (GKIPNPLLGLDST)

Isotype: IgG

Form: Liquid

Datasheet

Version: 2.0.0

Revision date: 12 Sep 2025



Purification:	Purified through a protein G column, eluted with high and low pH buffers and neutralized immediately, followed by dialysis against PBS.
Storage:	Aliquot and store at -20°C. Avoid repeated freeze/thaw cycles.
Buffer:	PBS containing 0.09% sodium azide.
Note:	THIS PRODUCT IS FOR RESEARCH USE ONLY. NOT FOR USE IN DIAGNOSTIC, THERAPEUTIC OR COSMETIC PROCEDURES. NOT FOR HUMAN OR ANIMAL CONSUMPTION.

For Reference Only