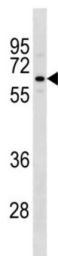


TATA-Box Binding Protein Associated Factor, RNA Polymerase I Subunit B (TAF1B) Antibody

Catalogue No.: abx034645



Component of RNA polymerase I core factor complex that acts as a GTF2B/TFIIB-like factor and plays a key role in multiple steps during transcription initiation such as preinitiation complex (PIC) assembly and postpolymerase recruitment events in polymerase I (Pol I) transcription. Binds rDNA promoters and plays a role in Pol I recruitment as a component of the SL1/TIF-IB complex and, possibly, directly through its interaction with RRN3.

Target:	TATA-Box Binding Protein Associated Factor, RNA Polymerase I Subunit B (TAF1B)
Clonality:	Polyclonal
Reactivity:	Human
Tested Applications:	ELISA, WB
Host:	Rabbit
Recommended dilutions:	WB: 1/1000. Optimal dilutions/concentrations should be determined by the end user.
Conjugation:	Unconjugated
Immunogen:	KLH-conjugated synthetic peptide between 367-396 amino acids from the Central region of human TAF1B.
Isotype:	IgG
Form:	Liquid
Purification:	Purified through a protein A column, followed by peptide affinity purification.
Storage:	Aliquot and store at -20°C. Avoid repeated freeze/thaw cycles.
UniProt Primary AC:	Q53T94 (UniProt , ExPASy)

Datasheet

Version: 3.0.0

Revision date: 19 Mar 2025



KEGG: hsa:9014

String: [9606.ENSP00000263663](#)

Molecular Weight: Calculated MW: 68.8 kDa

Buffer: PBS containing 0.09% sodium azide.

Specificity: Predicted to react with Monkey TAF1B.

Note: THIS PRODUCT IS FOR RESEARCH USE ONLY. NOT FOR USE IN DIAGNOSTIC, THERAPEUTIC OR COSMETIC PROCEDURES. NOT FOR HUMAN OR ANIMAL CONSUMPTION.

For Reference Only