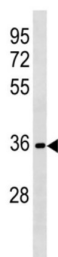


Ret Finger Protein-Like 3 (RFPL3) Antibody

Catalogue No.: abx034660



The function of this protein remains unknown. RFPL3 protein is encoded by 2 exons and is 91 to 94% identical to RFPL1 and RFPL2. Exon 1 of RFPL3 encodes a putative RING-like motif, and exon 2 encodes a B30-2 domain. Seroussi et al. (1999) proposed that RFPL3 arose from an intrachromosomal duplication.

Target:	Ret Finger Protein-Like 3 (RFPL3)
Clonality:	Polyclonal
Reactivity:	Human
Tested Applications:	ELISA, WB
Host:	Rabbit
Recommended dilutions:	WB: 1/1000. Optimal dilutions/concentrations should be determined by the end user.
Conjugation:	Unconjugated
Immunogen:	KLH-conjugated synthetic peptide between 70-98 amino acids from the N-terminal region of human RFPL3.
Isotype:	IgG
Form:	Liquid
Purification:	Purified through a protein A column, followed by peptide affinity purification.
Storage:	Aliquot and store at -20°C. Avoid repeated freeze/thaw cycles.
UniProt Primary AC:	O75679 (UniProt , ExPASy)
KEGG:	hsa:10738

Datasheet

Version: 3.0.0

Revision date: 16 Mar 2025



String: [9606.ENSF00000249007](#)

Molecular Weight: Calculated MW: 35.4 kDa

Buffer: PBS containing 0.09% sodium azide.

Note: THIS PRODUCT IS FOR RESEARCH USE ONLY. NOT FOR USE IN DIAGNOSTIC, THERAPEUTIC OR COSMETIC PROCEDURES. NOT FOR HUMAN OR ANIMAL CONSUMPTION.

For Reference Only