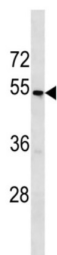


Taste 2 Receptor Member 43 (TAS2R43) Antibody

Catalogue No.: abx034675



Gustducin-coupled receptor implicated in the perception of bitter compounds in the oral cavity and the gastrointestinal tract. Signals through PLCB2 and the calcium-regulated cation channel TRPM5. Activated by the sulfonyl amide sweeteners saccharin and acesulfame K. In airway epithelial cells, binding of bitter compounds increases the intracellular calcium ion concentration and stimulates ciliary beat frequency. May acts as chemosensory receptors in airway epithelial cells to detect and eliminate potential noxious agents from the airways (By similarity).

Target:	Taste 2 Receptor Member 43 (TAS2R43)
Clonality:	Polyclonal
Reactivity:	Human
Tested Applications:	ELISA, WB
Host:	Rabbit
Recommended dilutions:	WB: 1/1000. Optimal dilutions/concentrations should be determined by the end user.
Conjugation:	Unconjugated
Immunogen:	KLH-conjugated synthetic peptide between 135-163 amino acids from the Central region of human TAS2R43.
Isotype:	IgG
Form:	Liquid
Purification:	Purified through a protein A column, followed by peptide affinity purification.
Storage:	Aliquot and store at -20°C. Avoid repeated freeze/thaw cycles.
UniProt Primary AC:	P59537 (UniProt , ExPASy)

Datasheet

Version: 2.0.0

Revision date: 18 Sep 2025



KEGG: hsa:259289

String: [9606.ENSP00000431719](#)

Molecular Weight: Calculated MW: 35.6 kDa

Buffer: PBS containing 0.09% sodium azide.

Note: THIS PRODUCT IS FOR RESEARCH USE ONLY. NOT FOR USE IN DIAGNOSTIC, THERAPEUTIC OR COSMETIC PROCEDURES. NOT FOR HUMAN OR ANIMAL CONSUMPTION.

For Reference Only