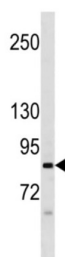


N-Acetylated-Alpha-Linked Acidic Dipeptidase 2 (NALD2) Antibody

Catalogue No.: abx034686



WB analysis of CEM cell line lysates (35 µg), using NALD2 antibody.

Has N-acetylated-alpha-linked-acidic dipeptidase (NAALADase) activity. Also exhibits a dipeptidyl-peptidase IV type activity. Inactivate the peptide neurotransmitter N-acetylaspartylglutamate.

Target:	N-Acetylated-Alpha-Linked Acidic Dipeptidase 2 (NALD2)
Clonality:	Polyclonal
Reactivity:	Human
Tested Applications:	ELISA, WB
Host:	Rabbit
Recommended dilutions:	WB: 1/1000. Optimal dilutions/concentrations should be determined by the end user.
Conjugation:	Unconjugated
Immunogen:	This NALD2 antibody is generated from rabbits immunized with a KLH conjugated synthetic peptide between 507-535 amino acids from the C-terminal region of human NALD2.
Isotype:	IgG
Form:	Liquid
Purification:	This antibody is purified through a protein A column, followed by peptide affinity purification.
Storage:	Aliquot and store at -20°C. Avoid repeated freeze/thaw cycles.
UniProt Primary AC:	Q9Y3Q0 (UniProt , ExPASy)
String:	9606.ENSP00000432481

Datasheet

Version: 3.0.0

Revision date: 23 Jun 2025



Molecular Weight: Calculated MW: 83.6 kDa

Buffer: PBS containing 0.09% sodium azide.

Specificity: Predicted to react with Mouse NAALAD2.

Note: THIS PRODUCT IS FOR RESEARCH USE ONLY. NOT FOR USE IN DIAGNOSTIC, THERAPEUTIC OR COSMETIC PROCEDURES. NOT FOR HUMAN OR ANIMAL CONSUMPTION.

For Reference Only