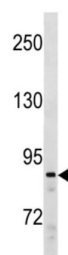


Polycomb Protein SUZ12 (SUZ12) Antibody

Catalogue No.: abx034691



Polycomb group (PcG) protein. Component of the PRC2/EED-EZH2 complex, which methylates 'Lys-9' (H3K9me) and 'Lys-27' (H3K27me) of histone H3, leading to transcriptional repression of the affected target gene. The PRC2/EED-EZH2 complex may also serve as a recruiting platform for DNA methyltransferases, thereby linking two epigenetic repression systems. Genes repressed by the PRC2/EED-EZH2 complex include HOXC8, HOXA9, MYT1 and CDKN2A.

Target: Polycomb Protein SUZ12 (SUZ12)

Clonality: Polyclonal

Reactivity: Human, Mouse

Tested Applications: ELISA, WB

Host: Rabbit

Recommended dilutions: WB: 1/1000. Optimal dilutions/concentrations should be determined by the end user.

Conjugation: Unconjugated

Immunogen: KLH-conjugated synthetic peptide between 559-588 amino acids from the C-terminal region of human SUZ12.

Isotype: IgG

Form: Liquid

Purification: Purified through a protein A column, followed by peptide affinity purification.

Storage: Aliquot and store at -20°C. Avoid repeated freeze/thaw cycles.

UniProt Primary AC: Q15022 ([UniProt](#), [ExPASy](#))

KEGG: hsa:23512

Datasheet

Version: 2.0.0

Revision date: 14 Jun 2025



String: [9606.ENSPO0000316578](#)

Molecular Weight: Calculated MW: 83.1 kDa

Buffer: PBS containing 0.09% sodium azide.

Specificity: Predicted to react with Mouse SUZ12.

Note: THIS PRODUCT IS FOR RESEARCH USE ONLY. NOT FOR USE IN DIAGNOSTIC, THERAPEUTIC OR COSMETIC PROCEDURES. NOT FOR HUMAN OR ANIMAL CONSUMPTION.

For Reference Only