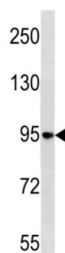


Protein Kinase C-Binding Protein NELL1 (NELL1) Antibody

Catalogue No.: abx034694



Involved in the control of cell growth and differentiation (By similarity).

| | |
|-------------------------------|---|
| Target: | Protein Kinase C-Binding Protein NELL1 (NELL1) |
| Clonality: | Polyclonal |
| Reactivity: | Human |
| Tested Applications: | ELISA, WB |
| Host: | Rabbit |
| Recommended dilutions: | WB: 1/1000. Optimal dilutions/concentrations should be determined by the end user. |
| Conjugation: | Unconjugated |
| Immunogen: | KLH-conjugated synthetic peptide between 115-143 amino acids from the N-terminal region of human NELL1. |
| Isotype: | IgG |
| Form: | Liquid |
| Purification: | Purified through a protein A column, followed by peptide affinity purification. |
| Storage: | Aliquot and store at -20°C. Avoid repeated freeze/thaw cycles. |
| UniProt Primary AC: | Q92832 (UniProt , ExPASy) |
| KEGG: | hsa:4745 |
| String: | 9606.ENSP00000298925 |

Datasheet

Version: 4.0.0

Revision date: 09 Sep 2025



Molecular Weight: Calculated MW: 89.6 kDa

Buffer: PBS containing 0.09% sodium azide.

Note: THIS PRODUCT IS FOR RESEARCH USE ONLY. NOT FOR USE IN DIAGNOSTIC, THERAPEUTIC OR COSMETIC PROCEDURES. NOT FOR HUMAN OR ANIMAL CONSUMPTION.

For Reference Only