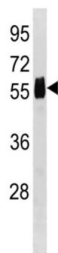


Carboxypeptidase, Vitellogenic Like (CPVL) Antibody

Catalogue No.: abx034695



May be involved in the digestion of phagocytosed particles in the lysosome, participation in an inflammatory protease cascade, and trimming of peptides for antigen presentation.

Target: Carboxypeptidase, Vitellogenic Like (CPVL)

Clonality: Polyclonal

Reactivity: Human

Tested Applications: ELISA, WB

Host: Rabbit

Recommended dilutions: WB: 1/1000. Optimal dilutions/concentrations should be determined by the end user.

Conjugation: Unconjugated

Immunogen: KLH-conjugated synthetic peptide between 448-476 amino acids from the C-terminal region of human CPVL.

Isotype: IgG

Form: Liquid

Purification: Purified through a protein A column, followed by peptide affinity purification.

Storage: Aliquot and store at -20°C. Avoid repeated freeze/thaw cycles.

UniProt Primary AC: Q9H3G5 ([UniProt](#), [ExPASy](#))

String: [9606.ENSP00000387164](#)

Datasheet

Version: 2.0.0

Revision date: 01 Jun 2025



Molecular Weight: Calculated MW: 54.2 kDa

Buffer: PBS containing 0.09% sodium azide.

Note: THIS PRODUCT IS FOR RESEARCH USE ONLY. NOT FOR USE IN DIAGNOSTIC, THERAPEUTIC OR COSMETIC PROCEDURES. NOT FOR HUMAN OR ANIMAL CONSUMPTION.

For Reference Only