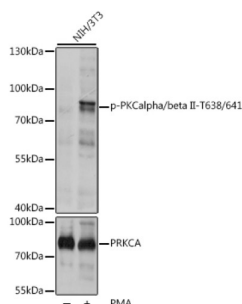
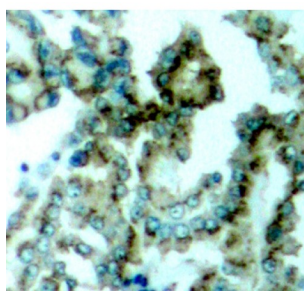


## PRKCB (pT641) Antibody

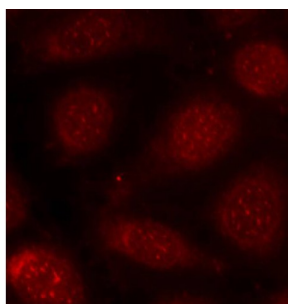
Catalogue No.: abx000243



Western blot analysis of lysates from NIH/3T3 cells, using Phospho-PKCalpha/beta II-T638/641 antibody at 1/1000 dilution or PRKCA antibody. NIH/3T3 cells were treated by PMA/TPA (200nM) for 30 minutes after serum-starvation overnight. Secondary antibody: HRP-conjugated Goat anti-Rabbit IgG (H+L) at 1/10000 dilution. Lysates/proteins: 25 µg per lane. Blocking buffer: 3% BSA. Exposure time: 1s.



Immunohistochemistry analysis of paraffin-embedded Human lung carcinoma tissue, using Phospho-PKCalpha/beta II-T638/641 Antibody. Microwave antigen retrieval performed in 0.01 M Tris/EDTA Buffer (pH 9.0) prior to IHC staining.



Immunofluorescence analysis of methanol-fixed MCF-7 cells using Phospho-PKCalpha/beta II-T638/641 Antibody.

PRKCB (pT641) Antibody is a Rabbit Polyclonal antibody against PRKCB (pT641). Protein kinase C (PKC) is a family of serine- and threonine-specific protein kinases that can be activated by calcium and second messenger diacylglycerol. PKC family members phosphorylate a wide variety of protein targets and are known to be involved in diverse cellular signaling pathways. PKC family members also serve as major receptors for phorbol esters, a class of tumor promoters. Each member of the PKC family has a specific expression profile and is believed to play a distinct role in cells. The protein encoded by this gene is one of the PKC family members. This protein kinase has been reported to be involved in many different cellular functions, such as B cell activation, apoptosis induction, endothelial cell proliferation, and intestinal sugar absorption. Studies in mice also suggest that this kinase may also regulate neuronal functions and correlate fear-induced conflict behavior after stress. Alternatively spliced transcript variants encoding distinct isoforms have been reported.

**Target:** PRKCB (pT641)

**Clonality:** Polyclonal

**Reactivity:** Human, Mouse, Rat

**Tested Applications:** ELISA, WB, IHC, IF/ICC

# Datasheet

Version: 7.0.0  
Revision date: 25 Aug 2025



<b>Host:</b>	Rabbit
<b>Recommended dilutions:</b>	ELISA: 1 µg/ml, WB: 1/500 - 1/2000, IHC-P: 1/50 - 1/100, IF/ICC: 1/100 - 1/200. Not tested in IHC-F. Optimal dilutions/concentrations should be determined by the end user.
<b>Conjugation:</b>	Unconjugated
<b>Immunogen:</b>	Synthetic peptide corresponding to PRKCB (pT641). The exact sequence is proprietary.
<b>Isotype:</b>	IgG
<b>Form:</b>	Liquid
<b>Purification:</b>	Purified by affinity chromatography.
<b>Storage:</b>	Aliquot and store at -20°C. Avoid repeated freeze/thaw cycles.
<b>UniProt Primary AC:</b>	P05771 ( <a href="#">UniProt</a> , <a href="#">ExPASy</a> )
<b>Gene Symbol:</b>	PRKCB
<b>GeneID:</b>	<a href="#">5579</a>
<b>NCBI Accession:</b>	NP_002728.2
<b>Molecular Weight:</b>	Calculated MW: 76/77 kDa Observed MW: 80 kDa
<b>Buffer:</b>	PBS, pH 7.3, containing 0.02% sodium azide, 50% glycerol.
<b>Concentration:</b>	> 0.2 mg/ml
<b>Note:</b>	THIS PRODUCT IS FOR RESEARCH USE ONLY. NOT FOR USE IN DIAGNOSTIC, THERAPEUTIC OR COSMETIC PROCEDURES. NOT FOR HUMAN OR ANIMAL CONSUMPTION.