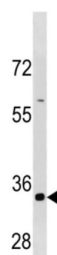


G2/mitotic-Specific Cyclin-B3 (CCNB3) Antibody

Catalogue No.: abx034757



Cyclins are positive regulatory subunits of the cyclin-dependent kinases (CDKs), and thereby play an essential role in the control of the cell cycle, notably via their destruction during cell division. Its tissue specificity suggest that it may be required during early meiotic prophase I.

Target: G2/mitotic-Specific Cyclin-B3 (CCNB3)

Clonality: Polyclonal

Reactivity: Human

Tested Applications: ELISA, WB

Host: Rabbit

Recommended dilutions: WB: 1/1000. Optimal dilutions/concentrations should be determined by the end user.

Conjugation: Unconjugated

Immunogen: KLH-conjugated synthetic peptide between 1311-1338 amino acids from the C-terminal region of human CCNB3.

Isotype: IgG

Form: Liquid

Purification: Purified through a protein A column, followed by peptide affinity purification.

Storage: Aliquot and store at -20°C. Avoid repeated freeze/thaw cycles.

UniProt Primary AC: Q8WWL7 ([UniProt](#), [ExPASy](#))

KEGG: hsa:85417

Datasheet

Version: 3.0.0

Revision date: 27 Jun 2025



String: [9606.ENSF00000365210](#)

Molecular Weight: Calculated MW: 158 kDa

Buffer: PBS containing 0.09% sodium azide.

Note: THIS PRODUCT IS FOR RESEARCH USE ONLY. NOT FOR USE IN DIAGNOSTIC, THERAPEUTIC OR COSMETIC PROCEDURES. NOT FOR HUMAN OR ANIMAL CONSUMPTION.

For Reference Only