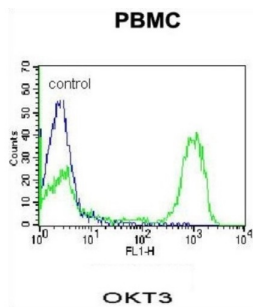


## T-Cell Surface Glycoprotein CD3 Epsilon Chain (CD3E) Antibody

Catalogue No.: abx034780



The CD3 complex mediates signal transduction.

<b>Target:</b>	T-Cell Surface Glycoprotein CD3 Epsilon Chain (CD3E)
<b>Clonality:</b>	Monoclonal
<b>Reactivity:</b>	Human
<b>Tested Applications:</b>	ELISA, FCM
<b>Host:</b>	Mouse
<b>Recommended dilutions:</b>	FCM: 1/50. Optimal dilutions/concentrations should be determined by the end user.
<b>Conjugation:</b>	Unconjugated
<b>Immunogen:</b>	Human CD3.
<b>Isotype:</b>	IgG <sub>2a</sub>
<b>Form:</b>	Liquid
<b>Purification:</b>	Purified through a protein G column, eluted with high and low pH buffers and neutralized immediately, followed by dialysis against PBS.
<b>Storage:</b>	Aliquot and store at -20°C. Avoid repeated freeze/thaw cycles.
<b>UniProt Primary AC:</b>	P07766 ( <a href="#">UniProt</a> , <a href="#">ExPASy</a> )
<b>KEGG:</b>	hsa:916
<b>String:</b>	<a href="#">9606.ENSP00000354566</a>

# Datasheet

Version: 2.0.0

Revision date: 08 Sep 2025



**Molecular Weight:** Calculated MW: 23.1 kDa

**Buffer:** PBS containing 0.09% sodium azide.

**Note:** THIS PRODUCT IS FOR RESEARCH USE ONLY. NOT FOR USE IN DIAGNOSTIC, THERAPEUTIC OR COSMETIC PROCEDURES. NOT FOR HUMAN OR ANIMAL CONSUMPTION.

For Reference Only