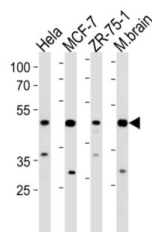


## F-Box Protein 28 (FBXO28) Antibody

Catalogue No.: abx034804



Probably recognizes and binds to some phosphorylated proteins and promotes their ubiquitination and degradation (By similarity).

**Target:** F-Box Protein 28 (FBXO28)

**Clonality:** Polyclonal

**Reactivity:** Human, Mouse

**Tested Applications:** ELISA, WB

**Host:** Rabbit

**Recommended dilutions:** WB: 1/1000. Optimal dilutions/concentrations should be determined by the end user.

**Conjugation:** Unconjugated

**Immunogen:** KLH-conjugated synthetic peptide between 339-368 amino acids from the C-terminal region of human FBXO28.

**Isotype:** IgG

**Form:** Liquid

**Purification:** Purified through a protein A column, followed by peptide affinity purification.

**Storage:** Aliquot and store at -20°C. Avoid repeated freeze/thaw cycles.

**UniProt Primary AC:** Q9NVF7 ([UniProt](#), [ExPASy](#))

**NCBI Accession:** NP\_001129587.1, NP\_055991.1

# Datasheet

Version: 3.0.0

Revision date: 10 Oct 2025



**String:** [9606.ENSPO0000355827](#)

**Molecular Weight:** Calculated MW: 41.1 kDa

**Buffer:** PBS containing 0.09% sodium azide.

**Specificity:** Predicted to react with Cow FBXO28.

**Note:** THIS PRODUCT IS FOR RESEARCH USE ONLY. NOT FOR USE IN DIAGNOSTIC, THERAPEUTIC OR COSMETIC PROCEDURES. NOT FOR HUMAN OR ANIMAL CONSUMPTION.

For Reference Only