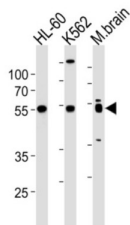


Prostaglandin E Receptor 4 (PTGER4) Antibody

Catalogue No.: abx034826



Receptor for prostaglandin E2 (PGE2). The activity of this receptor is mediated by G (s) proteins that stimulate adenylate cyclase. Has a relaxing effect on smooth muscle. May play an important role in regulating renal hemodynamics, intestinal epithelial transport, adrenal aldosterone secretion, and uterine function.

Target:	Prostaglandin E Receptor 4 (PTGER4)
Clonality:	Polyclonal
Reactivity:	Human, Mouse
Tested Applications:	ELISA, WB, IHC
Host:	Rabbit
Recommended dilutions:	WB: 1/1000, IHC-P: 1/25. Not tested in IHC-F. Optimal dilutions/concentrations should be determined by the end user.
Conjugation:	Unconjugated
Immunogen:	KLH-conjugated synthetic peptide between 242-269 amino acids from the Central region of human PTGER4.
Isotype:	IgG
Form:	Liquid
Purification:	Purified through a protein A column, followed by peptide affinity purification.
Storage:	Aliquot and store at -20°C. Avoid repeated freeze/thaw cycles.
UniProt Primary AC:	P35408 (UniProt , ExPASy)
NCBI Accession:	NP_000949.1

Datasheet

Version: 4.0.0

Revision date: 13 Sep 2025



KEGG: hsa:5734

String: [9606.ENSP00000302846](#)

Molecular Weight: Calculated MW: 53.1 kDa

Buffer: PBS containing 0.09% sodium azide.

Specificity: Predicted to react with Rat, Cow and Rabbit PTGER4.

Note: THIS PRODUCT IS FOR RESEARCH USE ONLY. NOT FOR USE IN DIAGNOSTIC, THERAPEUTIC OR COSMETIC PROCEDURES. NOT FOR HUMAN OR ANIMAL CONSUMPTION.

For Reference Only