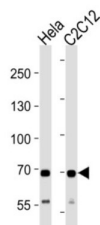


Succinate Dehydrogenase Complex Subunit A (SDHA) Antibody

Catalogue No.: abx034841



Flavoprotein (FP) subunit of succinate dehydrogenase (SDH) that is involved in complex II of the mitochondrial electron transport chain and is responsible for transferring electrons from succinate to ubiquinone (coenzyme Q). Can act as a tumor suppressor.

Target:	Succinate Dehydrogenase Complex Subunit A (SDHA)
Clonality:	Polyclonal
Reactivity:	Human
Tested Applications:	ELISA, WB, IHC
Host:	Rabbit
Recommended dilutions:	WB: 1/1000, IHC-P: 1/25. Not tested in IHC-F. Optimal dilutions/concentrations should be determined by the end user.
Conjugation:	Unconjugated
Immunogen:	KLH-conjugated synthetic peptide between 577-605 amino acids from the C-terminal region of human SDHA.
Isotype:	IgG
Form:	Liquid
Purification:	Purified through a protein A column, followed by peptide affinity purification.
Storage:	Aliquot and store at -20°C. Avoid repeated freeze/thaw cycles.
UniProt Primary AC:	P31040 (UniProt , ExPASy)
Gene Symbol:	SDHA

Datasheet

Version: 4.0.0

Revision date: 20 Sep 2025



NCBI Accession: NP_004159.2

KEGG: hsa:6389

String: [9606.ENSP00000264932](#)

Molecular Weight: Calculated MW: 72.7 kDa

Buffer: PBS containing 0.09% sodium azide.

Specificity: Predicted to react with Rat and Xenopus SDHA.

Note: THIS PRODUCT IS FOR RESEARCH USE ONLY. NOT FOR USE IN DIAGNOSTIC, THERAPEUTIC OR COSMETIC PROCEDURES. NOT FOR HUMAN OR ANIMAL CONSUMPTION.

For Reference Only