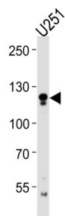


Endothelin Converting Enzyme 2 (ECE2) Antibody

Catalogue No.: abx034843



Converts big endothelin-1 to endothelin-1. Also involved in the processing of various neuroendocrine peptides, including neurotensin, angiotensin I, substance P, proenkephalin-derived peptides, and prodynorphin-derived peptides. May limit beta-amyloid peptide accumulation in brain. May also have methyltransferase activity.

Target:	Endothelin Converting Enzyme 2 (ECE2)
Clonality:	Polyclonal
Reactivity:	Human
Tested Applications:	ELISA, WB, IHC
Host:	Rabbit
Recommended dilutions:	WB: 1/1000, IHC-P: 1/25. Not tested in IHC-F. Optimal dilutions/concentrations should be determined by the end user.
Conjugation:	Unconjugated
Immunogen:	KLH-conjugated synthetic peptide between 551-579 amino acids from the Central region of human ECE2.
Isotype:	IgG
Form:	Liquid
Purification:	Purified through a protein A column, followed by peptide affinity purification.
Storage:	Aliquot and store at -20°C. Avoid repeated freeze/thaw cycles.
UniProt Primary AC:	O60344 (UniProt , ExPASy)
Gene Symbol:	ECE2

Datasheet

Version: 3.0.0

Revision date: 03 Jun 2025



NCBI Accession: NP_001032401.1, NP_001093590.1, NP_001093591.1, NP_055508.3, NP_115707.2

KEGG: hsa:110599583, hsa:9718, hsa:110599564

Buffer: PBS containing 0.09% sodium azide.

Specificity: Predicted to react with Mouse and Cow ECE2.

Note: THIS PRODUCT IS FOR RESEARCH USE ONLY. NOT FOR USE IN DIAGNOSTIC, THERAPEUTIC OR COSMETIC PROCEDURES. NOT FOR HUMAN OR ANIMAL CONSUMPTION.

For Reference Only