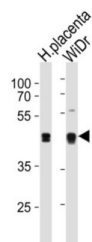


SAP30-Binding Protein (SAP30BP) Antibody

Catalogue No.: abx034856



Induces cell death. May act as a transcriptional corepressor of a gene related to cell survival. May be involved in the regulation of beta-2-microglobulin genes.

Target:	SAP30-Binding Protein (SAP30BP)
Clonality:	Polyclonal
Reactivity:	Human
Tested Applications:	ELISA, WB, IF/ICC
Host:	Rabbit
Recommended dilutions:	WB: 1/1000, IF/ICC: 1/25. Optimal dilutions/concentrations should be determined by the end user.
Conjugation:	Unconjugated
Immunogen:	KLH-conjugated synthetic peptide between 160-188 amino acids from the Central region of human SAP30BP.
Isotype:	IgG
Form:	Liquid
Purification:	Purified through a protein A column, followed by peptide affinity purification.
Storage:	Aliquot and store at -20°C. Avoid repeated freeze/thaw cycles.
UniProt Primary AC:	Q9UHR5 (UniProt , ExPASy)
Gene Symbol:	SAP30BP

Datasheet

Version: 3.0.0

Revision date: 04 Oct 2025



NCBI Accession: NP_037392.1

String: [9606.ENSP00000462116](#)

Molecular Weight: Calculated MW: 33.9 kDa

Buffer: PBS containing 0.09% sodium azide.

Specificity: Predicted to react with Mouse SAP30BP.

Note: THIS PRODUCT IS FOR RESEARCH USE ONLY. NOT FOR USE IN DIAGNOSTIC, THERAPEUTIC OR COSMETIC PROCEDURES. NOT FOR HUMAN OR ANIMAL CONSUMPTION.

For Reference Only